



Contract No. HK/2009/01

Wan Chai Development Phase II – Central -Wan Chai Bypass at
Hong Kong Convention and Exhibition Centre

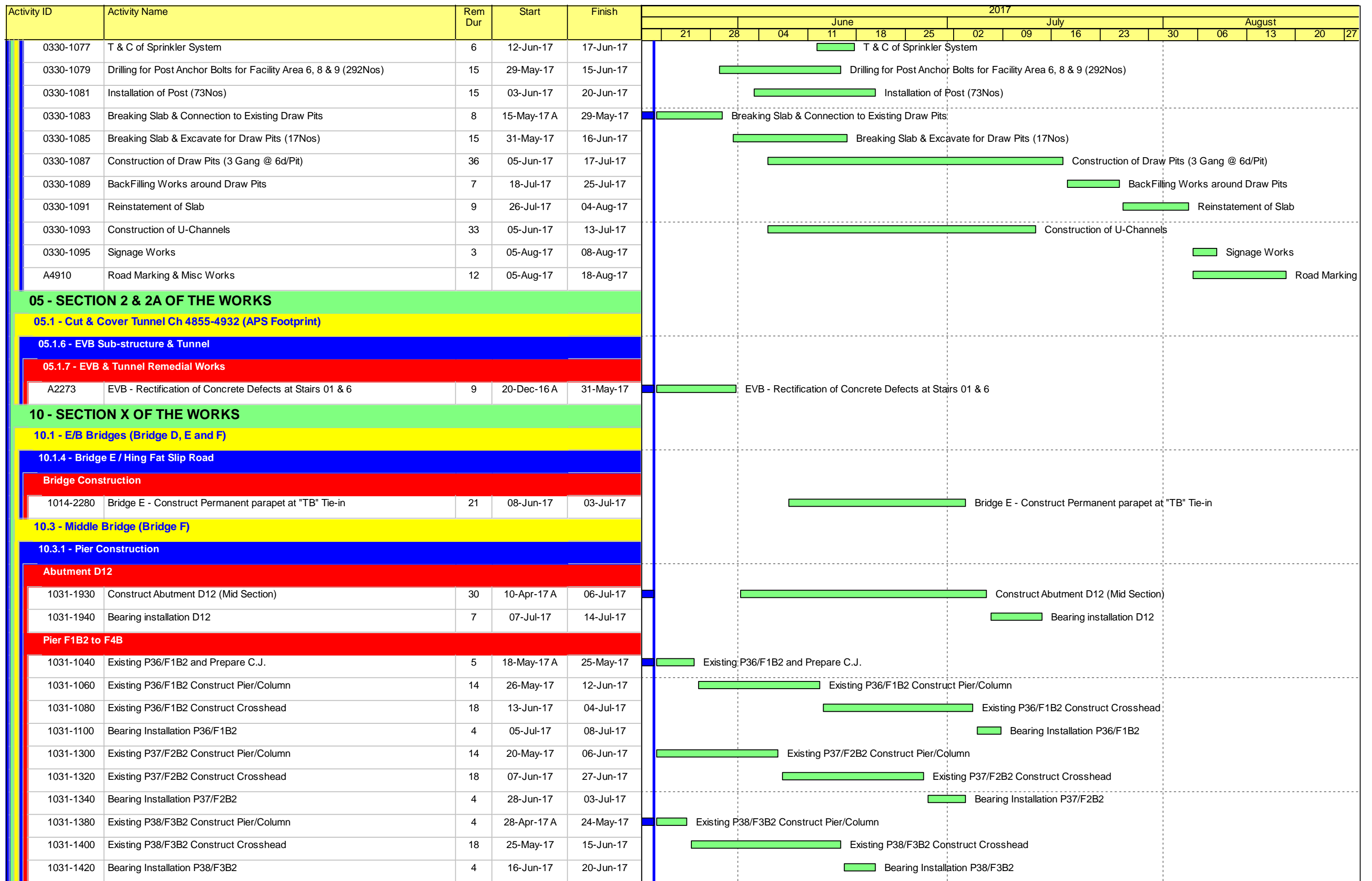
Construction Activities for Three Months Rolling

Construction Activities	June 2017	July 2017	August 2017
Reinstatement of Amenity Area			
Road and Drain Works			

Activity ID	Activity Name	Rem Dur	Start	Finish	2017													
					June					July				August				
					21	28	04	11	18	25	02	09	16	23	30	06	13	20
3MRP - May 2017 to Aug 2017																		
02 - PRE-CONSTRUCTION WORKS																		
02.5 - Bridge Segment/Beam Off-site Precasting																		
0250-4018	Bridge F1B2 - Pier F2B Segment - 6 nos. - Mould 2	2	25-Apr-17 A	22-May-17	■ Bridge F1B2 - Pier F2B Segment - 6 nos. - Mould 2													
0250-4019	Bridge F1B2 - Pier F3B Segment - 5 nos. - Mould 2	14	23-May-17	08-Jun-17	■ Bridge F1B2 - Pier F3B Segment - 5 nos. - Mould 2													
0250-4057	Bridge F1B2 - Abut D12 Segment - 6 nos. - Mould 1	11	12-May-17 A	02-Jun-17	■ Bridge F1B2 - Abut D12 Segment - 6 nos. - Mould 1													
0250-4059	Bridge F1B2 - Pier F2B Segment - 5 nos. - Mould 1	13	03-Jun-17	17-Jun-17	■ Bridge F1B2 - Pier F2B Segment - 5 nos. - Mould 1													
0250-4110	Bridge F1B1 - Pier F1A Segment - 13 nos. - Mould 3	14	24-Apr-17 A	06-Jun-17	■ Bridge F1B1 - Pier F1A Segment - 13 nos. - Mould 3													
0250-4115	Bridge F1B1 - Pier F2A Segment - 11nos. - Mould 3	8	09-May-17 A	15-Jun-17	■ Bridge F1B1 - Pier F2A Segment - 11nos. - Mould 3													
0250-4120	Bridge F1B1 - Pier F3A Segment - 6 nos. - Mould 3	17	16-Jun-17	06-Jul-17	■ Bridge F1B1 - Pier F3A Segment - 6 nos. - Mould 3													
A3180	Delivery of Segments - Bridge F1B2	18	01-Jun-17	21-Jun-17	■ Delivery of Segments - Bridge F1B2													
A3190	Delivery of Segments - Bridge F1B1	18	16-Jun-17	07-Jul-17	■ Delivery of Segments - Bridge F1B1													
03 - PRELIMINARY WORKS																		
03.3 - Interface Works																		
FEHD Permanent Depot																		
0330-1023	Drilling & Base Plate Installation (M25 - 104Nos)	12	16-May-17 A	03-Jun-17	■ Drilling & Base Plate Installation (M25 - 104Nos)													
0330-1025	Installation of Pole (25Nos)	13	23-May-17	07-Jun-17	■ Installation of Pole (25Nos)													
0330-1027	Installation of Beams (77Nos)	26	24-May-17	23-Jun-17	■ Installation of Beams (77Nos)													
0330-1029	Installation of Bondek (Soffit Formworks)	12	16-Jun-17	29-Jun-17	■ Installation of Bondek (Soffit Formworks)													
0330-1031	Rebar Fixing	7	23-Jun-17	30-Jun-17	■ Rebar Fixing													
0330-1033	Edges Formworks	2	29-Jun-17	30-Jun-17	■ Edges Formworks													
0330-1035	Concreting of Deck	3	03-Jul-17	05-Jul-17	■ Concreting of Deck													
0330-1043	Construction of Brace Footing	5	20-May-17	25-May-17	■ Construction of Brace Footing													
0330-1047	Erection of Bracing Beam (3Nos)	3	26-May-17	29-May-17	■ Erection of Bracing Beam (3Nos)													
0330-1049	Touch-up Painting	12	02-Jun-17	15-Jun-17	■ Touch-up Painting													
0330-1051	Waterproofing & Slab Reinstatement	7	31-May-17	07-Jun-17	■ Waterproofing & Slab Reinstatement													
0330-1055	Construction of Lamp Pole Footing (12Nos)	21	20-May-17	14-Jun-17	■ Construction of Lamp Pole Footing (12Nos)													
0330-1057	Drilling for Lamp Pole at Existing Slab (8Nos Poles; M16-64Nos)	8	26-May-17	05-Jun-17	■ Drilling for Lamp Pole at Existing Slab (8Nos Poles; M16-64Nos)													
0330-1059	Installation of Lamp Pole (total 20Nos)	14	01-Jun-17	16-Jun-17	■ Installation of Lamp Pole (total 20Nos)													
0330-1061	Breaking Existing Slab for Cross Road Ducting (Approx 300m)	18	02-Jun-17	22-Jun-17	■ Breaking Existing Slab for Cross Road Ducting (Approx 300m)													
0330-1063	Laying Duct	5	23-Jun-17	28-Jun-17	■ Laying Duct													
0330-1065	Cabling Works	9	29-Jun-17	10-Jul-17	■ Cabling Works													
0330-1067	Slab Reinstatement	8	11-Jul-17	19-Jul-17	■ Slab Reinstatement													
0330-1069	Drilling for Post Anchor Bolts for Facility Area 5 & 10 (172Nos)	6	15-May-17 A	26-May-17	■ Drilling for Post Anchor Bolts for Facility Area 5 & 10 (172Nos)													
0330-1071	Installation of Post (43Nos)	9	20-May-17	31-May-17	■ Installation of Post (43Nos)													
0330-1073	Construction of Steel Roof	9	25-May-17	05-Jun-17	■ Construction of Steel Roof													
0330-1075	Sprinkler System Installation	10	31-May-17	10-Jun-17	■ Sprinkler System Installation													

■ Remaining Level of Effort ■ Remaining Work
■ Actual Level of Effort ■ Critical Remaining Work
■ Actual Work ◆ ◆ Milestone

Contract HY/2009/19
Three Months Rolling Programme (20 May 2017 to 19 August 2017)



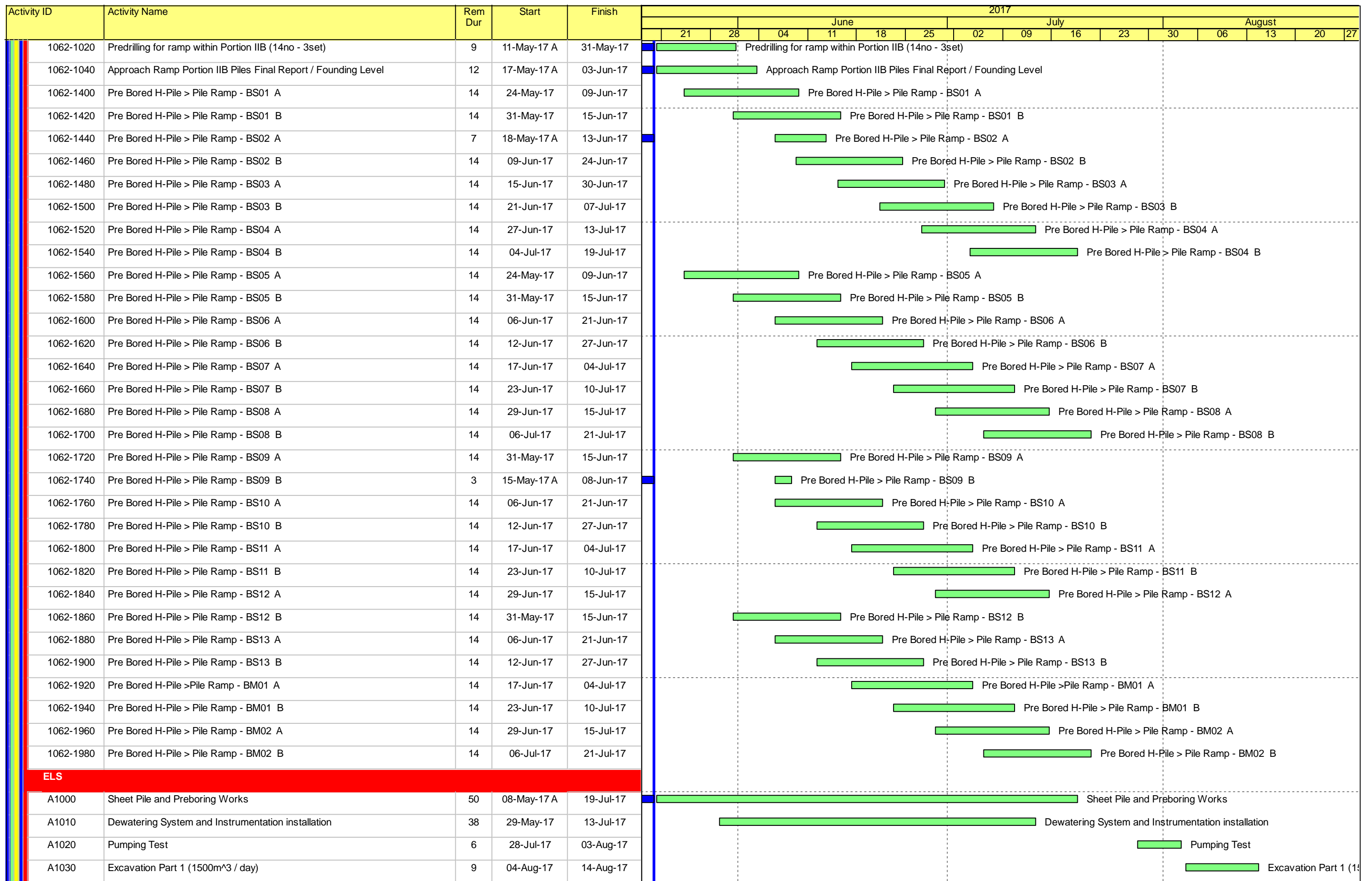
█ Remaining Level of Effort █ Remaining Work
█ Actual Level of Effort █ Critical Remaining Work
█ Actual Work ◆ ◆ Milestone

Contract HY/2009/19
Three Months Rolling Programme (20 May 2017 to 19 August 2017)

Activity ID	Activity Name	Rem Dur	Start	Finish	2017													
					June					July				August				
					21	28	04	11	18	25	02	09	16	23	30	06	13	20
1031-1460	Existing P39/F4B Construct Pier/Column	2	14-Apr-17 A	22-May-17	Existing P39/F4B Construct Pier/Column													
1031-1480	Existing P39/F4B Construct Crosshead	18	23-May-17	13-Jun-17	Existing P39/F4B Construct Crosshead													
1031-1500	Bearing Installation P39/F4B	4	14-Jun-17	17-Jun-17	Bearing Installation P39/F4B													
Pier F5B to F8B																		
1031-1560	Existing P40/F5B Construct Crosshead	18	27-Apr-17 A	10-Jun-17	Existing P40/F5B Construct Crosshead													
1031-1580	Bearing Installation P40/F5B	4	12-Jun-17	15-Jun-17	Bearing Installation P40/F5B													
1031-1660	Bearing Installation P41/F6B	4	20-May-17	24-May-17	Bearing Installation P41/F6B													
1031-1740	Bearing Installation P42/F7B	2	10-May-17 A	22-May-17	Bearing Installation P42/F7B													
10.3.2 - Bridge Construction																		
Bridge F3B																		
1032-1840	LG-A Launching - Engage FL at F7B/Pier42	2	25-May-17	26-May-17	LG-A Launching - Engage FL at F7B/Pier42													
1032-1860	P42/F7B - Install Pier Segment - Place Pier Segment	1	14-Jun-17	14-Jun-17	P42/F7B - Install Pier Segment - Place Pier Segment													
1032-1880	P42/F7B - Install Pier Segment - Adjust Segment Level and Location	2	15-Jun-17	16-Jun-17	P42/F7B - Install Pier Segment - Adjust Segment Level and Location													
1032-1900	P42/F7B - Install Pier Segment - Grouting the Bearing Upper Plinth	2	17-Jun-17	19-Jun-17	P42/F7B - Install Pier Segment - Grouting the Bearing Upper Plinth													
1032-1920	P42/F7B - Install Pier Segment - Stressing Nailing	2	20-Jun-17	21-Jun-17	P42/F7B - Install Pier Segment - Stressing Nailing													
1032-1940	LG-A Launching - Install MS at P42/F7B	1	22-Jun-17	22-Jun-17	LG-A Launching - Install MS at P42/F7B													
1032-1960	LG-A Launching - Deactivate the MS at F9B/Pier44 and Engage FL at P41/F6B	2	23-Jun-17	24-Jun-17	LG-A Launching - Deactivate the MS at F9B/Pier44 and Engage FL at P41/F6B													
1032-1980	P41/F6B - Install Pier Segment - Place Pier Segment	1	26-Jun-17	26-Jun-17	P41/F6B - Install Pier Segment - Place Pier Segment													
1032-2000	P41/F6B - Install Pier Segment - Adjust Segment Level and Location	2	27-Jun-17	28-Jun-17	P41/F6B - Install Pier Segment - Adjust Segment Level and Location													
1032-2020	P41/F6B - Install Pier Segment - Grouting the Bearing Upper Plinth	2	29-Jun-17	30-Jun-17	P41/F6B - Install Pier Segment - Grouting the Bearing Upper Plinth													
1032-2040	P41/F6B - Install Pier Segment - Stressing Nailing	2	03-Jul-17	04-Jul-17	P41/F6B - Install Pier Segment - Stressing Nailing													
1032-2060	P41/F6B - Install Pier Segment - Install MS at F6B/Pier41	1	05-Jul-17	05-Jul-17	P41/F6B - Install Pier Segment - Install MS at F6B/Pier41													
1032-2080	P42/F7B - T Span Erection (5 pairs)	4	06-Jul-17	10-Jul-17	P42/F7B - T Span Erection (5 pairs)													
1032-2100	P43/F8B(MJ Left) - End Span Erection - Hanging Segments	3	11-Jul-17	13-Jul-17	P43/F8B(MJ Left) - End Span Erection - Hanging Segments													
1032-2120	P43/F8B(MJ Left) - End Span Erection - Erect Segments	1	14-Jul-17	14-Jul-17	P43/F8B(MJ Left) - End Span Erection - Erect Segments													
1032-2140	P43/F8B(MJ Left) - End Span Erection - Stitching	2	15-Jul-17	17-Jul-17	P43/F8B(MJ Left) - End Span Erection - Stitching													
1032-2160	P43/F8B(MJ Left) - End Span Erection - Formwork Fixing for and Grouting for Bearing	2	15-Jul-17	17-Jul-17	P43/F8B(MJ Left) - End Span Erection - Formwork Fixing for and Grouting for Bearing													
1032-2180	P43/F8B(MJ Left) - End Span Erection - Prestress Span Tendons	2	18-Jul-17	19-Jul-17	P43/F8B(MJ Left) - End Span Erection - Prestress Span Tendons													
1032-2200	P43/F8B(MJ Left) - End Span Erection - Remove Hanger Bar & Hanger Beam & Stitching Formwork	1	20-Jul-17	20-Jul-17	P43/F8B(MJ Left) - End Span Erection - Remove Hanger Bar & Hanger Beam & Stitching Formwork													
1032-2220	LG-A Launching - Deactivate the MS at F8B/Pier43 and Engage FL at P40/F5B	2	21-Jul-17	22-Jul-17	LG-A Launching - Deactivate the MS at F8B/Pier43 and Engage FL at P40/F5B													
1032-2240	P41/F6B - T Span Erection (6 pairs)	4	24-Jul-17	27-Jul-17	P41/F6B - T Span Erection (6 pairs)													
1032-2260	P40/F5B - Install Pier Segment - Place Pier Segment (2nos.)	2	24-Jul-17	25-Jul-17	P40/F5B - Install Pier Segment - Place Pier Segment													
1032-2280	P40/F5B - Install Pier Segment - Adjust Segment Level and Location	3	26-Jul-17	28-Jul-17	P40/F5B - Install Pier Segment - Adjust Segment													
1032-2300	P40/F5B - Install Pier Segment - Install the Tie & Packing System	2	29-Jul-17	31-Jul-17	P40/F5B - Install Pier Segment - Install the													
1032-2320	P40/F5B - Install Pier Segment - Install MS at P40/F5B (Right) and Engage FL at P39/F4B	2	01-Aug-17	02-Aug-17	P40/F5B - Install Pier Segment - Install													
1032-2340	P40/F5B(MJ Right) - End Span Erection - Hanging Segments	2	03-Aug-17	04-Aug-17	P40/F5B(MJ Right) - End Span Erection													
1032-2360	P40/F5B(MJ Right) - End Span Erection - Erect Segments	1	05-Aug-17	05-Aug-17	P40/F5B(MJ Right) - End Span Erection													

Remaining Level of Effort Remaining Work
 Actual Level of Effort Critical Remaining Work
 Actual Work Milestone

Contract HY/2009/19
Three Months Rolling Programme (20 May 2017 to 19 August 2017)



█ Remaining Level of Effort █ Remaining Work
█ Actual Level of Effort █ Critical Remaining Work
█ Actual Work ◆ ◆ Milestone

Contract HY/2009/19
Three Months Rolling Programme (20 May 2017 to 19 August 2017)

Activity ID	Activity Name	Rem Dur	Start	Finish	2017											
					September						October				November	
					20	27	03	10	17	24	01	08	15	22	29	05
1031-1940	Bearing installation D12	7	21-Sep-17	28-Sep-17	Bearing installation D12											
10.3.2 - Bridge Construction																
Bridge F3B																
1032-2480	Bridge F3B - Construct South Parapet	15	21-Aug-17	06-Sep-17	Bridge F3B - Construct South Parapet											
1032-2500	Bridge F3B - Lingitudinal Stitching	15	21-Aug-17	06-Sep-17	Bridge F3B - Lingitudinal Stitching											
1032-2520	Bridge F3B - Construct Median Barriers	18	07-Sep-17	27-Sep-17	Bridge F3B - Construct Median Barriers											
Bridge F2B																
1032-2700	P39/F4B - T Span Erection (6 pairs)	2	19-Aug-17 A	22-Aug-17	P39/F4B - T Span Erection (6 pairs)											
1032-2720	P40/F5B(MJ Left) - End Span Erection - Hanging Segments	2	23-Aug-17	24-Aug-17	P40/F5B(MJ Left) - End Span Erection - Hanging Segments											
1032-2740	P40/F5B(MJ Left) - End Span Erection - Erect Segments	1	25-Aug-17	25-Aug-17	P40/F5B(MJ Left) - End Span Erection - Erect Segments											
1032-2760	P40/F5B(MJ Left) - End Span Erection - Stitching	2	26-Aug-17	28-Aug-17	P40/F5B(MJ Left) - End Span Erection - Stitching											
1032-2780	P40/F5B(MJ Left) - End Span Erection - Formwork Fixing for and Grouting for Bearing	2	26-Aug-17	28-Aug-17	P40/F5B(MJ Left) - End Span Erection - Formwork Fixing for and Grouting for Bearing											
1032-2800	P40/F5B(MJ Left) - End Span Erection - Prestress Span Tendons	2	29-Aug-17	30-Aug-17	P40/F5B(MJ Left) - End Span Erection - Prestress Span Tendons											
1032-2820	P40/F5B(MJ Left) - End Span Erection - Remove Hanger Bar & Hanger Beam & Stitching Formwork	1	31-Aug-17	31-Aug-17	P40/F5B(MJ Left) - End Span Erection - Remove Hanger Bar & Hanger Beam & Stitching Formwork											
1032-2840	LG-A Launching - Deactivate the MS at F5B/Pier40 and Engage FL at P38/F4B	2	01-Sep-17	02-Sep-17	LG-A Launching - Deactivate the MS at F5B/Pier40 and Engage FL at P38/F4B											
1032-2860	P38/F4B - Install Pier Segment - Place Pier Segment	2	04-Sep-17	05-Sep-17	P38/F4B - Install Pier Segment - Place Pier Segment											
1032-2880	P38/F4B - Install Pier Segment - Adjust Segment Level and Location	3	06-Sep-17	08-Sep-17	P38/F4B - Install Pier Segment - Adjust Segment Level and Location											
1032-2900	P38/F4B - Install Pier Segment - Install the Tie & Packing System	1	09-Sep-17	09-Sep-17	P38/F4B - Install Pier Segment - Install the Tie & Packing System											
1032-2920	P38/F4B - Launch LG -A and Engage FL at F2B/Pier37	1	11-Sep-17	11-Sep-17	P38/F4B - Launch LG -A and Engage FL at F2B/Pier37											
1032-2940	P38/F4B(MJ Right) - End Span Erection - Hanging Segments	2	12-Sep-17	13-Sep-17	P38/F4B(MJ Right) - End Span Erection - Hanging Segments											
1032-2960	P38/F4B(MJ Right) - End Span Erection - Erect Segments	1	14-Sep-17	14-Sep-17	P38/F4B(MJ Right) - End Span Erection - Erect Segments											
1032-2980	P38/F4B(MJ Right) - End Span Erection - Stitching	2	15-Sep-17	16-Sep-17	P38/F4B(MJ Right) - End Span Erection - Stitching											
1032-3000	P38/F4B(MJ Right) - End Span Erection - Formwork Fixing for and Grouting for Bearing	2	15-Sep-17	16-Sep-17	P38/F4B(MJ Right) - End Span Erection - Formwork Fixing for and Grouting for Bearing											
1032-3020	P38/F4B(MJ Right) - End Span Erection - Prestress Span Tendons	2	18-Sep-17	19-Sep-17	P38/F4B(MJ Right) - End Span Erection - Prestress Span Tendons											
1032-3040	P38/F4B(MJ Right) - End Span Erection - Remove Hanger Bar & Hanger Beam & Stitching Formwork	1	20-Sep-17	20-Sep-17	P38/F4B(MJ Right) - End Span Erection - Remove Hanger Bar & Hanger Beam & Stitching Formwork											
1032-3060	Prestress Extenral Tendon of Bridge F2B	12	21-Sep-17	06-Oct-17	Prestress Extenral Tendon of Bridge F2B											
1032-3080	Bridge F2B - Longitudinal Stitching	12	07-Oct-17	20-Oct-17	Bridge F2B - Longitudinal Stitching											
1032-3100	Bridge F2B - Construct Median Barriers	18	21-Oct-17	11-Nov-17	Bridge F2B - Construct Median Barriers											
Bridge F1B2																
1032-1000	Relignment LG - A for Launching at Bridge F1B2	4	21-Sep-17	25-Sep-17	Relignment LG - A for Launching at Bridge F1B2											
1032-3160	P38/F4B - Install Pier Segment - Place Pier Segment	1	26-Sep-17	26-Sep-17	P38/F4B - Install Pier Segment - Place Pier Segment											
1032-3180	P38/F4B - Install Pier Segment - Adjust Segment Level and Location	2	27-Sep-17	28-Sep-17	P38/F4B - Install Pier Segment - Adjust Segment Level and Location											
1032-3200	P38/F4B - Install Pier Segment - Grouting the Bearing Upper Plinth	3	29-Sep-17	03-Oct-17	P38/F4B - Install Pier Segment - Grouting the Bearing Upper Plinth											
1032-3220	P38/F4B - Install Pier Segment - Stressing Nailing	2	04-Oct-17	06-Oct-17	P38/F4B - Install Pier Segment - Stressing Nailing											

█ Remaining Level of Effort █ Remaining Work
█ Actual Level of Effort █ Critical Remaining Work
█ Actual Work ◆ Milestone

Contract HY/2009/19
Three Months Rolling Programme (20.Aug.2017 to 19.Nov.2017)

Activity ID	Activity Name	Rem Dur	Start	Finish	2017											
					September						October				November	
					20	27	03	10	17	24	01	08	15	22	29	05
1061-3920	Pre Bored H-Pile > Pile Ramp - BN12 A - (H-Pile + Grouting)	1	13-Sep-17	13-Sep-17	■ Pre Bored H-Pile > Pile Ramp - BN12 A - (H-Pile + Grouting)											
1061-3940	Pre Bored H-Pile > Pile Ramp - BN12 B (LHR)	7	13-Sep-17	20-Sep-17	■ Pre Bored H-Pile > Pile Ramp - BN12 B (LHR)											
1061-3960	Pre Bored H-Pile > Pile Ramp - BN12 B - (H-Pile + Grouting)	1	21-Sep-17	21-Sep-17	■ Pre Bored H-Pile > Pile Ramp - BN12 B - (H-Pile + Grouting)											
1061-3980	Pre Bored H-Pile > Pile Ramp - BN13 A (LHR)	7	21-Sep-17	28-Sep-17	■ Pre Bored H-Pile > Pile Ramp - BN13 A (LHR)											
1061-4000	Pre Bored H-Pile > Pile Ramp - BN13 A - (H-Pile + Grouting)	1	29-Sep-17	29-Sep-17	■ Pre Bored H-Pile > Pile Ramp - BN13 A - (H-Pile + Grouting)											
1061-4120	Pre Bored H-Pile > Pile Ramp - BN01 B - (H-Pile + Grouting)	1	21-Aug-17	21-Aug-17	■ Pre Bored H-Pile > Pile Ramp - BN01 B - (H-Pile + Grouting)											
1061-4240	Pre Bored H-Pile > Pile Ramp - BN06 A - (H-Pile + Grouting)	1	21-Aug-17	21-Aug-17	■ Pre Bored H-Pile > Pile Ramp - BN06 A - (H-Pile + Grouting)											
Excavation & ELS Works																
1061-5220	Ch 5234 - 5285 > Install 2nd Layer of Strut & Waling	10	17-Aug-17 A	31-Aug-17	■ Ch 5234 - 5285 > Install 2nd Layer of Strut & Waling											
1061-5240	Ch 5234 - 5285 > Excav to FEL	12	01-Sep-17	14-Sep-17	■ Ch 5234 - 5285 > Excav to FEL											
Structure Works																
1061-5560	Bay 6 - Ch 5262 - 5277 > Base Slab - Blinding Layer	1	15-Sep-17	15-Sep-17	■ Bay 6 - Ch 5262 - 5277 > Base Slab - Blinding Layer											
1061-5580	Bay 6 - Ch 5262 - 5277 > Base Slab - Water Proofing Membrane	2	16-Sep-17	18-Sep-17	■ Bay 6 - Ch 5262 - 5277 > Base Slab - Water Proofing Membrane											
1061-5600	Bay 6 - Ch 5262 - 5277 > Base Slab - Rebar Fixing	6	19-Sep-17	25-Sep-17	■ Bay 6 - Ch 5262 - 5277 > Base Slab - Rebar Fixing											
1061-5620	Bay 6 - Ch 5262 - 5277 > Base Slab - Erect Formworks	4	26-Sep-17	29-Sep-17	■ Bay 6 - Ch 5262 - 5277 > Base Slab - Erect Formworks											
1061-5640	Bay 6 - Ch 5262 - 5277 > Base Slab - Concreting	1	30-Sep-17	30-Sep-17	■ Bay 6 - Ch 5262 - 5277 > Base Slab - Concreting											
1061-5660	Bay 5 - Ch 5277 - 5292 > Base Slab - Blinding Layer (WF1)	1	03-Oct-17	03-Oct-17	■ Bay 5 - Ch 5277 - 5292 > Base Slab - Blinding Layer (WF1)											
1061-5680	Bay 5 - Ch 5277 - 5292 > Base Slab - Base Slab - Water Proofing Membrane	3	04-Oct-17	07-Oct-17	■ Bay 5 - Ch 5277 - 5292 > Base Slab - Base Slab - Water Proofing Membrane											
1061-5700	Bay 5 - Ch 5277 - 5292 > Base Slab - Rebar Fixing (WF1)	6	09-Oct-17	14-Oct-17	■ Bay 5 - Ch 5277 - 5292 > Base Slab - Rebar Fixing (WF1)											
1061-5720	Bay 5 - Ch 5277 - 5292 > Base Slab - Erect Formworks (WF1)	3	16-Oct-17	18-Oct-17	■ Bay 5 - Ch 5277 - 5292 > Base Slab - Erect Formworks (WF1)											
1061-5740	Bay 5 - Ch 5277 - 5292 > Base Slab - Concreting (WF1)	1	19-Oct-17	19-Oct-17	■ Bay 5 - Ch 5277 - 5292 > Base Slab - Concreting (WF1)											
1061-5760	Bay 4 - Ch 5292 - 5303 > Base Slab - Blinding Layer (WF1)	1	20-Oct-17	20-Oct-17	■ Bay 4 - Ch 5292 - 5303 > Base Slab - Blinding Layer (WF1)											
1061-5780	Bay 4 - Ch 5292 - 5303 > Base Slab - Base Slab - Water Proofing Membrane	3	21-Oct-17	24-Oct-17	■ Bay 4 - Ch 5292 - 5303 > Base Slab - Base Slab - Water Proofing Membrane											
1061-5800	Bay 4 - Ch 5292 - 5303 > Base Slab - Rebar Fixing (WF1)	5	25-Oct-17	31-Oct-17	■ Bay 4 - Ch 5292 - 5303 > Base Slab - Rebar Fixing (WF1)											
1061-5820	Bay 4 - Ch 5292 - 5303 > Base Slab - Erect Formworks (WF1)	3	01-Nov-17	03-Nov-17	■ Bay 4 - Ch 5292 - 5303 > Base Slab - Erect Formworks (WF1)											
1061-5840	Bay 4 - Ch 5292 - 5303 > Base Slab - Concreting (WF1)	1	04-Nov-17	04-Nov-17	■ Bay 4 - Ch 5292 - 5303 > Base Slab - Concreting (WF1)											
1061-5860	Bay 7 - Ch 5247 - 5262 > Base Slab - Blinding Layer (WF2)	1	03-Oct-17	03-Oct-17	■ Bay 7 - Ch 5247 - 5262 > Base Slab - Blinding Layer (WF2)											
1061-5880	Bay 7 - Ch 5247 - 5262 > Base Slab - Base Slab - Water Proofing Membrane	3	04-Oct-17	07-Oct-17	■ Bay 7 - Ch 5247 - 5262 > Base Slab - Base Slab - Water Proofing Membrane											
1061-5900	Bay 7 - Ch 5247 - 5262 > Base Slab - Rebar Fixing (WF2)	6	09-Oct-17	14-Oct-17	■ Bay 7 - Ch 5247 - 5262 > Base Slab - Rebar Fixing (WF2)											
1061-5920	Bay 7 - Ch 5247 - 5262 > Base Slab - Erect Formworks (WF2)	3	16-Oct-17	18-Oct-17	■ Bay 7 - Ch 5247 - 5262 > Base Slab - Erect Formworks (WF2)											
1061-5940	Bay 7 - Ch 5247 - 5262 > Base Slab - Concreting (WF2)	1	19-Oct-17	19-Oct-17	■ Bay 7 - Ch 5247 - 5262 > Base Slab - Concreting (WF2)											
1061-5960	Bay 8 - Ch 5232 - 5247 > Base Slab - Blinding Layer (WF2)	1	31-Oct-17	31-Oct-17	■ Bay 8 - Ch 5232 - 5247 > Base Slab - Blinding Layer (WF2)											
1061-5980	Bay 8 - Ch 5232 - 5247 > Base Slab - Base Slab - Water Proofing Membrane	3	01-Nov-17	03-Nov-17	■ Bay 8 - Ch 5232 - 5247 > Base Slab - Base Slab - Water Proofing Membrane											
1061-6000	Bay 8 - Ch 5232 - 5247 > Base Slab - Rebar Fixing (WF2)	5	04-Nov-17	09-Nov-17	■ Bay 8 - Ch 5232 - 5247 > Base Slab - Rebar Fixing (WF2)											
1061-6020	Bay 8 - Ch 5232 - 5247 > Base Slab - Erect Formworks (WF2)	3	10-Nov-17	13-Nov-17	■ Bay 8 - Ch 5232 - 5247 > Base Slab - Erect Formworks (WF2)											

■ Remaining Level of Effort ■ Remaining Work
■ Actual Level of Effort ■ Critical Remaining Work
■ Actual Work ◆ Milestone

Contract HY/2009/19
Three Months Rolling Programme (20.Aug.2017 to 19.Nov.2017)

China State Construction Engineering (Hong Kong) Ltd.

Contract No. HY/2009/15 - Central Wan Chai By Pass - Tunnel (Causeway Bay Typhoon Shelter Section)

Activity Name	Start	Finish	2017		
			Apr	May	Jun
Hung Hing Road Resurfacing	1/6/2017	30/6/2017			
Defect works inside tunnel	1/4/2017	30/9/2017			

China State Construction Engineering (Hong Kong) Ltd.

Contract No. HY/2009/15 - Central Wan Chai By Pass - Tunnel (Causeway Bay)

Activity Name	Start	Finish	2017		
			Jul	Aug	Sep
Hung Hing Road Resurfacing	1/6/2017	30/9/2017			
Defect works inside tunnel	1/4/2017	30/9/2017			



Activity ID	Activity Name	Remaining Dur	Early Start	Early Finish	Total Float	Activity % Complete	2017				
							Apr	May	Jun	Jul	Aug
HK/2012/08 Works Programme Rev.10(DD 31 March 2017)											
Works for Section Completion											
Construction											
Section II A - CWB Tunnel & Slip Road Structures and Facilities											
CWB D - Slip Road 1 - Trough / Retaining Wall											
CWB D - Slip Road 1 - Trough/Retaining Wall Structure											
SIIA12788	Sec II A - CWB SR1 Trough & RW: jet grout for seepage at SR1 trough	27	11-Mar-17 A	26-Apr-17	48	0%					
SIIA12800	Sec II A - CWB SR1 Trough & RW: Trough Structure - Base Slab & Wall (bay 1)	15	23-May-17	06-Jun-17	59	0%					
SIIA13720	Sec II A - CWB SR1 Trough & RW: Trough Structure - Base Slab & Wall (bay 2)	15	08-May-17	22-May-17	48	0%					
SIIA13740	Sec II A - CWB SR1 Trough & RW: Trough Structure - Base Slab & Wall (bay 3)	15	14-May-17	28-May-17	48	0%					
SIIA13800	Sec II A - CWB SR1 Trough & RW: Retaining Walls RW3 & RW4 (bay 1)	16	29-May-17	13-Jun-17	48	0%					
SIIA13860	Sec II A - CWB SR1 Trough & RW: Retaining Walls RW3 & RW4 (bay 2)	15	03-Jun-17	17-Jun-17	48	0%					
Section III A - Road A2, A4 & A5											
Roadwork & Utilities - Section 1 (L1806 - L1801)											
SIIIA10280	Sec III A - roadwork and utilities section 1 carriageway - Drainage works (TTA Stage 4A, 4B & 4C)	52	10-Apr-17*	15-Jun-17	15	0%					
SIIIA10290	Sec III A - roadwork and utilities section 1 carriageway - TTA Stage 5	15	26-Jun-17*	13-Jul-17	7	0%					
Roadwork & Utilities - Section 2 (L1810 - L1806)											
SIIIA12470	Sec III A - roadwork and utilities section 2 carriageway - Relocate site access	14	29-Jun-17*	15-Jul-17	8	0%					
Roadwork & Utilities - Section 4 (L1406 - L1401)											
SIIIA12930	Sec III A - roadwork and utilities section 4 carriageway - Drainage works (L1406 - L1401)	59	08-May-17*	17-Jul-17	0	0%					
Roadwork & Utilities - Section 5 (L1411 - L1406)											
SIIIA13150	Sec III A - roadwork and utilities section 5 carriageway - Drainage works (L1411 - L1406)	44	25-May-17*	17-Jul-17	0	0%					
Roadwork & Utilities - Section 6 (L1102 - L1411)											
SIIIA13370	Sec III A - roadwork and utilities section 1 carriageway - Drainage works (Culvert L - L1411)	49	10-May-17*	07-Jul-17	14	0%					
Section V - Remaining At-Grade Road; Remove 2nd Stage ITA											
Roadwork & Utilities											
Section 1 (L1504 - L1900)											
SV12420	Sec V - Roadwork & Utilities Section 1 Carriageway - Drainage Works at MVB North	112	16-Mar-17 A	17-Aug-17	57	0%					
SV12450	Sec V - Roadwork & Utilities Section 1 Carriageway - Gully pipe	109	05-May-17	11-Sep-17	57	0%					
Section 2 (L1510 - L1504)											
SV12600	Sec V - Roadwork & Utilities Section 2 Carriageway - Drainage Works (L1501-L1507, L1406B-L1406A,	82	25-May-17*	30-Aug-17	0	0%					
Section 3 (Culvert L - L1504)											
SIV12760	Sec V - Roadwork & Utilities Section 3 Carriageway - Drainage Works (Culvert L - L1504 & L1406B - L1406C)	51	16-Mar-17 A	06-Jun-17	130	0%					
SIV12800	Sec V - Roadwork & Utilities Section 3 Carriageway - Gully pipe (Culvert L - L1504)	30	07-Jun-17	12-Jul-17	130	0%					
Box Culvert L1 & FRP-L - Bay 8											

Data Date:
31-Mar-17

- Current Milestone
- Actual Work
- Critical Remaining Work
- Remaining Work
- Remaining Level of Effort

Three Months Rolling Programme for Non-CRIII (Apr 2017 to Jun 2017)
(Ref. to Works Programme Rev.10)

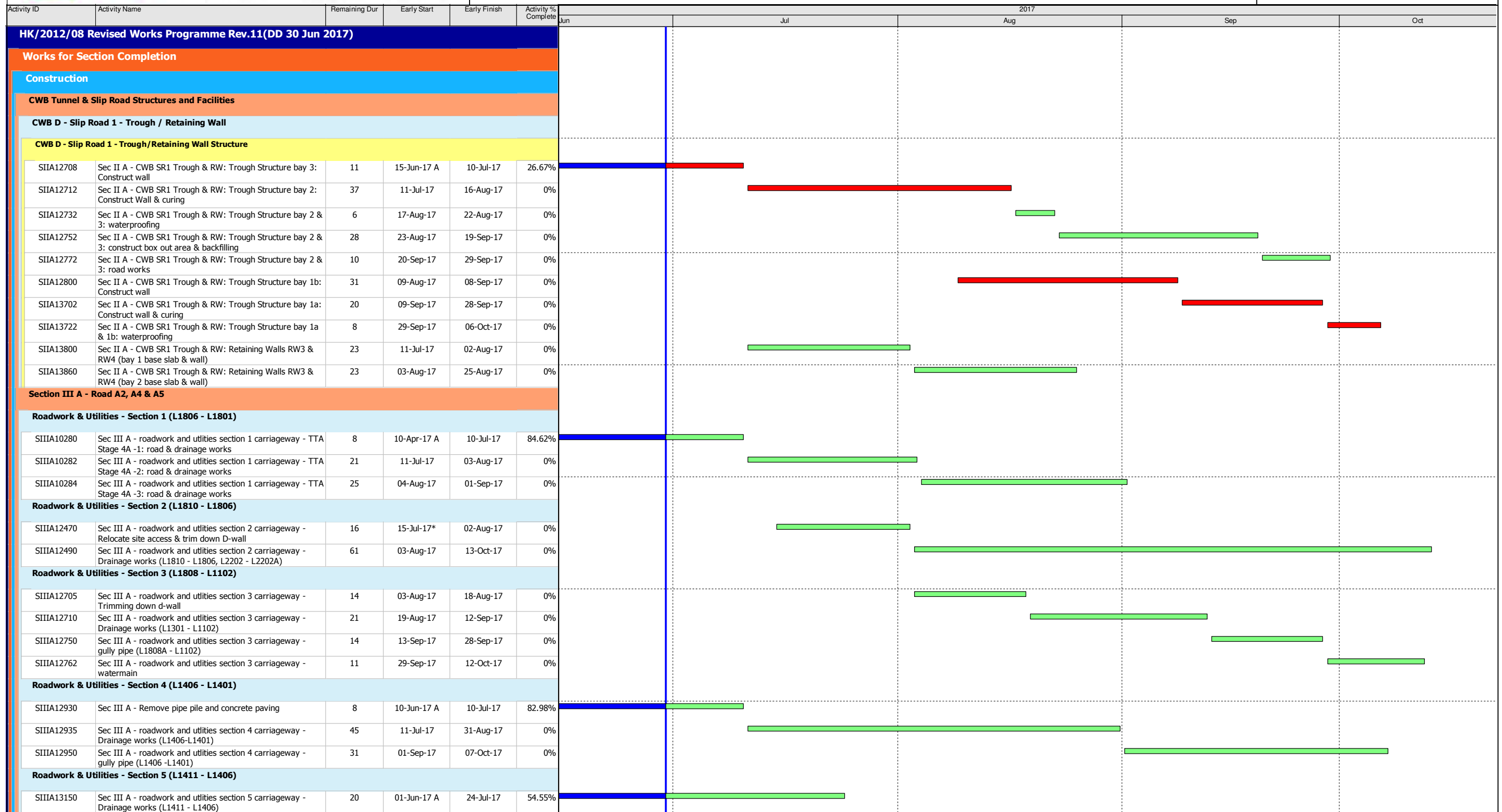
Date	Revision	Checked	Approved
11-May-17			



Activity ID	Activity Name	Remaining Dur	Early Start	Early Finish	Total Float	Activity % Complete	2017				
							Apr	May	Jun	Jul	Aug
Box Culvert L1 & FRP-L - Bay 8 Structure											
CUL11328	Culvert L - bay 8 - construt top slab	12	10-Apr-17*	21-Apr-17	79	0%					
Box Culvert L1 & FRP-L - Bay 8 Others											
CUL11340	Culvert L - bay 8 - backfill above box section	25	03-Jun-17*	03-Jul-17	30	0%					
Section VI D - Area 8B & 10											
WDII Box 1 Construction											
WDII Box 1 Remaining Structure											
WD-C6075	Sec VID - Remaining of Box I: Construct sacrificial wall (2.3m)	11	19-Mar-17 A	10-Apr-17	0	60.71%					
WD-C6080	Sec VID - Remaining of Box I: Construct Wall 13(23m run)	16	07-Mar-17 A	15-Apr-17	8	46.67%					
WD-C6090	Sec VID - Remaining of Box I: Construct 2.5m wall 13	13	11-Apr-17	23-Apr-17	0	0%					
WD-C6120	Sec VID - Remaining of Box I: Blasting and final sink box to -10.0 mPD	2	24-Apr-17	25-Apr-17	0	0%					
WD-C6122	Sec VID - Remaining of Box I: Stching of 4 bored piles	12	26-Apr-17	07-May-17	0	0%					
WD-C6124	Sec VID - Remaining of Box I: Scaffolding and soffit work at 4 bored piles	10	08-May-17	17-May-17	0	0%					
WD-C6126	Sec VID - Remaining of Box I: Roof rebar and concreting flat roof	8	18-May-17	25-May-17	0	0%					
WD-C6128	Sec VID - Remaining of Box I: Construct remaining roof half joint	7	28-May-17	03-Jun-17	0	0%					
WD-C6130	Sec VID - Remaining of Box I: Waterproofing work of roof	12	04-Jun-17	15-Jun-17	0	0%					
WD-C6140	Sec VID - Backfilling at South of Box I : Backfilling bagged cement to -6.5mPD	5	26-Apr-17	30-Apr-17	6	0%					
WD-C6160	Sec VID - Backfilling at South of Box I : Remove all ELS shoring and cut off P7 to P58 at -6.5mPD	18	01-May-17	18-May-17	6	0%					
WD-C6200	Sec VID - Backfilling at South of Box I : Remove SIC coarse screen hood	11	19-May-17	29-May-17	6	0%					
WD-C6220	Sec VID - Backfilling at South of Box I : Install pipe cap for box beam	4	30-May-17	02-Jun-17	6	0%					
WD-C6222	Sec VID - Backfilling at South of Box I : Stching of H-pile	4	03-Jun-17	06-Jun-17	6	0%					
WD-C6223	Sec VID - Backfilling at South of Box I : Bagged lighthouse concrete btw cap & seawall	6	07-Jun-17	12-Jun-17	6	0%					
WD-C6240	Sec VID - Backfilling at South of Box I : Install box beam	4	13-Jun-17	16-Jun-17	6	0%					
WD-C6250	Sec VID - Backfilling at South of Box I : Place 400mm thk precast cover to SIC	4	17-Jun-17	20-Jun-17	6	0%					
WD-C6255	Sec VID - Backfilling at South of Box I : Bagged lightweight concrete btw precast cover and box beam	4	21-Jun-17	24-Jun-17	6	0%					
WD-C6275	Sec VID - Backfilling at North of Box I : Type C concrete block at Box I half joint	4	19-May-17	22-May-17	13	0%					
WD-C6295	Sec VID - Backfilling at North of Box I : Install ceramsite concrete blocks	8	23-May-17	30-May-17	13	0%					
WD-C6315	Sec VID - Backfilling at North of Box I : Type A concrete block at roof of Box 1/2	3	31-May-17	02-Jun-17	13	0%					
WD-C6320	Sec VI D - Public fill on the top of Box I	15	16-Jun-17	30-Jun-17	0	0%					
Section IV - Slip Road 3											
Roadwork & Utilities											
Section 2 (L2301 - L2103)											
SIV11940	Sec IV - Roadwork & Utilities at SR3 Section 2 Carriageway - Drainage Works	35	20-Apr-17*	02-Jun-17	0	0%					
SIV11960	Sec IV - Roadwork & Utilities at SR3 Section 2 Carriageway - Watermain	10	28-Jun-17	10-Jul-17	161	0%					
SIV12000	Sec IV - Roadwork & Utilities at SR3 Section 2 Carriageway - Gully pipe	21	03-Jun-17	27-Jun-17	161	0%					
Section VII - Remainder Works											
Promenade Seawall Parapet Construction											
SVII10400	Sec VII - construct block seawall mass concrete coping & backfill to pavement formation	50	15-Jun-17*	12-Aug-17	13	0%					
Section VIII - Landscape Softworks											
Soft Landscaping Works											



Activity ID	Activity Name	Remaining Dur	Early Start	Early Finish	Total Float	Activity % Complete	2017				
							Apr	May	Jun	Jul	Aug
SVIII10040	Sec VIII - Trees Planting	118	31-Mar-17	24-Aug-17	0	0%					
Section X - Protection & Preservation of Trees											
Soft Landscaping Works											
SX10020	Sec X - Protection & Preservation of Trees	234	31-Jan-13 A	19-Nov-17	0	85.66%					



Data Date:
30-Jun-17

- Current Milestone
- Actual Work
- Critical Remaining Work
- Remaining Work
- Remaining Level of Effort

3-Months Rolling Programme for Non-CR III (July - September 2017)
(Ref. to Revised Works Programme Rev.11)

Date	Revision	Checked	Approved
10-Jul-17	11		



Activity ID	Activity Name	Remaining Dur	Early Start	Early Finish	Activity % Complete	2017				
						Jun	Jul	Aug	Sep	Oct
SIIIA13210	Sec III A - roadwork and utilities section 5 carriageway - gully pipe (L1411 - L1406)	25	25-Jul-17	22-Aug-17	0%					
SIIIA13230	Sec III A - roadwork and utilities section 5 carriageway - road formation: Crossroad duct(HEC), road kerb & formation	29	23-Aug-17	25-Sep-17	0%					
SIIIA13250	Sec III A - roadwork and utilities section 5 carriageway - black top	7	26-Sep-17	04-Oct-17	0%					
Roadwork & Utilities - Section 6 (L1102 - L1411)										
SIIIA13370	Sec III A - roadwork and utilities section 6 carriageway - Drainage works (Culvert L - L1411)	28	05-Jun-17 A	02-Aug-17	42.86%					
SIIIA13372	Sec III A - roadwork and utilities section 6 carriageway - Backfilling of water channel adjacent culvert K bay 16	14	18-Aug-17	02-Sep-17	0%					
SIIIA13373	Sec III A - roadwork and utilities section 6 carriageway - Backfilling of water channel from culvert K bay 16 to 20B	20	24-Aug-17	15-Sep-17	0%					
SIIIA13374	Sec III A - roadwork and utilities section 6 carriageway - Drainage works (L1101-L1102)	22	16-Sep-17	12-Oct-17	0%					
SIIIA13430	Sec III A - roadwork and utilities section 6 carriageway - gully pipe (Culvert L - L1411)	30	03-Aug-17	06-Sep-17	0%					
SIIIA13444	Sec III A - roadwork and utilities section 6 carriageway - watermain	7	07-Sep-17	14-Sep-17	0%					
SIIIA13445	Sec III A - roadwork and utilities section 6 carriageway - utilities: HEC , HGC, PCCW	14	15-Sep-17	30-Sep-17	0%					
Section V - Remaining At-Grade Road; Remove 2nd Stage ITA										
Roadwork & Utilities										
Section 1 (L1504 - L1900)										
SV12420	Sec V - Roadwork & Utilities Section 1 Carriageway - Drainage Works (L1905-L1906, L1504-L1503)	22	16-May-17 A	26-Jul-17	74.12%					
SV12450	Sec V - Roadwork & Utilities Section 1 Carriageway - Gully pipe (L1903 - L1906, L1501-L1504)	64	27-Jul-17	10-Oct-17	0%					
Section 2 (L1510 - L1504)										
SV12600	Sec V - Roadwork & Utilities Section 2 Carriageway - Drainage Works (L1501-L1507, L1406B-L1406A, L1611-L1609)	41	01-Jun-17 A	17-Aug-17	50%					
SV12602	Sec V - Roadwork & Utilities Section 2 Carriageway : Backfilling	7	18-Aug-17	25-Aug-17	0%					
SV12603	Sec V - Roadwork & Utilities Section 2 Carriageway - Gully pipe (L1501 - L1507 & L1611 - L1609)	30	26-Aug-17	29-Sep-17	0%					
Section 3 (Culvert L - L1504)										
SIV12762	Sec V - Roadwork & Utilities Section 3 Carriageway - Gully pipe (Culvert L - L1504)	11	08-Jun-17 A	13-Jul-17	63.33%					
SIV12765	Sec V - Roadwork & Utilities Section 3 Carriageway - Demolish D wall	25	16-Aug-17*	13-Sep-17	0%					
SIV12766	Sec V - Roadwork & Utilities Section 3 Carriageway - Drainage Works (Culvert L - L1611)	26	14-Sep-17	14-Oct-17	0%					
Section VI D - Area 8B & 10										
WDII Box 1 Construction										
WDII Box 1 ELS										
WD-C4120	Sec VIC - Joint Survey of excavated level	0	18-Oct-16 A	30-Jun-17	100%					
WDII Box 1 Remaining Structure										
SVID-6130	Sec VID - Remaining of Box I : Trimming bored pile A4 & B3 and casting	7	25-Jun-17 A	06-Jul-17	30%					
SVID-6140	Sec VID - Remaining of Box I : Construct remaining wall & roof slab	25	07-Jul-17	31-Jul-17	0%					
SVID-6220	Sec VID - Remaining of Box I : waterproofing for roof slab	5	01-Aug-17	05-Aug-17	0%					
SVID-6340	Sec VID - Box I South: Remove ELS and trimming pipe pile	5	12-Jun-17 A	04-Jul-17	68.75%					
SVID-6360	Sec VID - Box I South: Remove SIC coarse screen hood	16	05-Jul-17	20-Jul-17	0%					
SVID-6380	Sec VID - Box I South: Install pile cap & box beam	15	21-Jul-17	04-Aug-17	0%					
SVID-6620	Sec VID - Backfilling stage 1: backfill in Box I	22	05-Aug-17	26-Aug-17	0%					
SVID-6680	Sec VID - Backfilling stage 4: backfill in dry dock	30	18-Aug-17	16-Sep-17	0%					
SVID10100	Achievement of Section VID of the Works	0		26-Aug-17	0%					
Section IV - Slip Road 3										



Activity ID	Activity Name	Remaining Dur	Early Start	Early Finish	Activity % Complete	2017				
						Jun	Jul	Aug	Sep	Oct
Roadwork & Utilities										
Section 1 (L16608 - L1601)										
SIV11740	Sec IV - Re-Possion of the Area	0	24-Aug-17*		0%					
SIV11760	Sec IV - Roadwork & Utilities at SR3 Section 1 Carriageway - Drainage Works (L1607-L1601, L2004-L2005)	39	24-Aug-17	09-Oct-17	0%					
Section 2 (L2301 - L2103)										
SIV11940	Sec IV - Roadwork & Utilities at SR3 Section 2 Carriageway - Drainage Works (L2301-L2103)	21	16-Aug-17*	08-Sep-17	0%					
SIV11941	Sec IV - Roadwork & Utilities at SR3 Section 2 Carriageway - Drainage Works (L608-L1609)	30	09-Sep-17	14-Oct-17	0%					
Section 3 (M/H1.6 - L2301)										
SIV12100	Sec IV - Roadwork & Utilities at SR3 Section 3 Carriageway - Drainage Works (M/H1.7 - L2301)	31	09-Sep-17	16-Oct-17	0%					
SIV12102	Sec IV - Roadwork & Utilities at SR3 Section 3 Carriageway - M1.7-M1.6: Demolish seawall	20	16-Aug-17*	07-Sep-17	0%					
SIV12103	Sec IV - Roadwork & Utilities at SR3 Section 3 Carriageway - M1.7-M1.6: ELS	10	08-Sep-17	19-Sep-17	0%					
SIV12104	Sec IV - Roadwork & Utilities at SR3 Section 3 Carriageway - M1.7-M1.6: Construct manhole & pipes	36	20-Sep-17	02-Nov-17	0%					
SIV12138	Sec IV - Roadwork & Utilities at SR3 Section 3 Carriageway - Utilities: HEC to MVB Plant room	38	20-Jul-17*	01-Sep-17	0%					
SIV12170	Sec IV - Roadwork & Utilities at SR3 Section 3 footpath - Utilities: TCSS & HEC to MVB plant room	43	02-Sep-17	23-Oct-17	0%					
Section VII - Remainder Works										
Retaining Wall RW5 Construction										
SVII10660	Sec VII - Retaining Wall RW5 (bay 1) - construct base slab and wall	20	19-Sep-17	12-Oct-17	0%					
SVII10800	Sec VII - Retaining wall RW5 (bay 3) - construct base slab and wall	20	19-Sep-17	12-Oct-17	0%					
Promenade Seawall Parapet Construction										
SVII13100	Sec VII - Zone A1, A2 & B: Remove temporary seawall block	21	15-Aug-17*	07-Sep-17	0%					
SVII13120	Sec VII - Zone A1, A2 & B: Construct seawall block mass concrete coping	45	08-Sep-17	01-Nov-17	0%					
SVII13200	Sec VII - Zone D: Remove temporary seawall block	21	19-Sep-17	13-Oct-17	0%					
Promenade Footpath and EVA Construction										
Section 5										
SVII13270	Sec VII - section 5 footpath - drainage works (L2203 -L2204) & U channel	49	29-Aug-17	25-Oct-17	0%					
Section X - Protection & Preservation of Trees										
Soft Landscaping Works										
SX10020	Sec X - Protection & Preservation of Trees	322	31-Jan-13 A	17-May-18	80.27%					

Activity ID	Activity Name	Ori Dur	Rem Dur	Scheduled/ Actual Start	Scheduled/ Actual Finish	Total Float	Calendar	2017																	
								April					May					June				July			
								26	02	09	16	23	30	07	14	21	28	04	11	18	25	02	09	16	
Three Months Rolling Programme 2017-04-20 (dd 20-Apr-17)																									
Programme Milestones (Revised up to EOTO No.21)																									
Contractual Completion Dates																									
KDC0170	Section 9B Works (2134 days) - CWB Structure (CH3400 Eastward) (2-Dec-15 Noon)	0	0		20-Apr-17*	-504	Calendar Day	◆ Section 9B Works (2134 days) - CWB Structure (CH3400 Eastward) (2-Dec-15 Noon)																	
KDC0180	Section 10 Works (2469 days) - CWB Structure (CH3400 Westward) (31-Oct-16)	0	0		20-Apr-17*	-170	Calendar Day	◆ Section 10 Works (2469 days) - CWB Structure (CH3400 Westward) (31-Oct-16)																	
KDC0190	Section 11 Works (2673 days) - Remainder of Works/ Works Completion Date (23-May-17)	0	0		23-May-17*	0	Calendar Day	◆ Section 11 Works (2673 days) - Remainder of Works/ Works Completion Date (23-May-17)																	
Soft Landscaping & Establishment Key Dates																									
KDC0200	Section 11A Works (2440 days) - Remaining Landscape Softworks (03-Oct-16 Noon)	0	0		20-Apr-17*	-198	Calendar Day	◆ Section 11A Works (2440 days) - Remaining Landscape Softworks (03-Oct-16 Noon)																	
KDC0220	Section 12 Works (2672 days) - Protection and Preservation of Existing Trees (22-May-17 Noon)	0	0		22-May-17*	0	Calendar Day	◆ Section 12 Works (2672 days) - Protection and Preservation of Existing Trees (22-May-17 Noon)																	
Section 8A of the Works - Reprovisioning of Wan Chai Ferry Pier in Area 8																									
Outstanding Works																									
S8A-OUT-1040	Relocation of fire hydrant near Ferry Pier	10	10	14-Jul-17	25-Jul-17	-58	HK Working Day																		
S8A-OUT-1060	Reinstatement works of the flooring inside the rooms under staircase ST-01 of the Ferry Pier	12	12	03-Jul-17	14-Jul-17	-58	HK Working Day																		
S8A-OUT-1070	Reinstatement works of the flooring under the temporary covered walkway	6	6	14-Jul-17	20-Jul-17	-54	HK Working Day																		
Section 8B of the Works - Temporary Covered Walkway & Works in Area 8																									
Temporary Covered Walkway																									
S8B-TCW-02300	Temp Covered Walkway - Construct the remaining Type 4 Covered Walkway at west wing	36	36	17-Jun-17	27-Jul-17	-60	HK Working Day																		
Section 9B of the Works - CWB Tunnel Structure (CH3400 - CH3796)																									
Tunnel Portion 1 (CH3500-CH3630)																									
CWB Structural Works																									
Outstanding Works																									
S9B-T1-OUT-1010	TB1 - Remedial works of the cross road ducts	25	0	12-Oct-16 A	15-Apr-17 A		Calendar Day	■ TB1 - Remedial works of the cross road ducts																	
S9B-T1-OUT-1030	TB1 - Remedial works against water leakage identified inside the OHVD cells	30	0	14-Mar-17 A	12-Apr-17 A		Calendar Day	■ TB1 - Remedial works against water leakage identified inside the OHVD cells																	
Tunnel Portion 2 (CH3425-CH3500)																									
CWB Structural Works																									
Outstanding Works																									
S9B-T2-OUT-1010	TB2 - Remedial works of the cross road ducts	25	7	12-Oct-16 A	26-Apr-17	-511	Calendar Day	■ TB2 - Remedial works of the cross road ducts, TB2 - Remedial works of the cross road ducts																	
S9B-T2-OUT-1020	TB2 - Remedial works against water leakage identified inside the OHVD cells	25	5	12-Oct-16 A	24-Apr-17	29	Calendar Day	■ TB2 - Remedial works against water leakage identified inside the OHVD cells																	
Tunnel Portion 3 & Tunnel Portion 4 (CH3630-CH3790)																									
CWB Structural Works																									
S9B-T34-7400	ELS (S1) Removal - Bay 1 to Bay 8	28	28	08-Jun-17	06-Jul-17	-503	Calendar Day	■ ELS (S1) Removal																	
Tunnel Portion 5 (CH3400-CH3425)																									
Bay 13 (Eastern End Bay)																									
S9B-T5-B13-1020	Base Slab - Rebar Fixing	10	0	11-Feb-17 A	30-Mar-17 A		Calendar Day	■ Base Slab - Rebar Fixing																	
S9B-T5-B13-1030	Base Slab - Concrete	1	0	31-Mar-17 A	31-Mar-17 A		Calendar Day	■ Base Slab - Concrete																	
S9B-T5-B13-1040	Base Slab - Curing	4	0	01-Apr-17 A	04-Apr-17 A		Calendar Day	■ Base Slab - Curing																	
S9B-T5-B13-1050	Wall (North) - Waterproofing & Working Platform	4	0	10-Apr-17 A	14-Apr-17 A		Calendar Day	■ Wall (North) - Waterproofing & Working Platform																	
S9B-T5-B13-1060	Wall (North) - Rebar Fixing	3	0	15-Apr-17 A	17-Apr-17 A		Calendar Day	■ Wall (North) - Rebar Fixing																	
S9B-T5-B13-1070	Wall (North) - Formwork	2	0	18-Apr-17 A	19-Apr-17 A		Calendar Day	■ Wall (North) - Formwork																	
S9B-T5-B13-1080	Wall (North) - Concrete	1	1	20-Apr-17	20-Apr-17	-546	Calendar Day	■ Wall (North) - Concrete, Wall (North) - Concrete																	
S9B-T5-B13-1090	Wall (North) - Curing & Formwork Dismantling	3	3	21-Apr-17	23-Apr-17	-546	Calendar Day	■ Wall (North) - Curing & Formwork Dismantling, Wall (North) - Curing & Formwork Dismantling																	
S9B-T5-B13-1100	Wall (South) - Waterproofing & Working Platform	4	0	10-Apr-17 A	13-Apr-17 A		Calendar Day	■ Wall (South) - Waterproofing & Working Platform																	
S9B-T5-B13-1110	Wall (South) - Rebar Fixing	3	0	14-Apr-17 A	16-Apr-17 A		Calendar Day	■ Wall (South) - Rebar Fixing																	
S9B-T5-B13-1120	Wall (South) - Formwork	2	0	17-Apr-17 A	18-Apr-17 A		Calendar Day	■ Wall (South) - Formwork																	
S9B-T5-B13-1130	Wall (South) - Concrete	1	0	19-Apr-17 A	19-Apr-17 A		Calendar Day	■ Wall (South) - Concrete																	
S9B-T5-B13-1140	Wall (South) - Curing & Formwork Dismantling	3	3	20-Apr-17	22-Apr-17	-549	Calendar Day	■ Wall (South) - Curing & Formwork Dismantling, Wall (South) - Curing & Formwork Dismantling																	
S9B-T5-B13-1150	Wall (Middle) - Rebar Fixing & Working Platform	4	0	12-Mar-17 A	12-Apr-17 A		Calendar Day	■ Wall (Middle) - Rebar Fixing & Working Platform																	
S9B-T5-B13-1160	Wall (Middle) - Formwork	2	0	13-Apr-17 A	14-Apr-17 A		Calendar Day	■ Wall (Middle) - Formwork																	
S9B-T5-B13-1170	Wall (Middle) - Concrete	1	0	15-Apr-17 A	15-Apr-17 A		Calendar Day	■ Wall (Middle) - Concrete																	
S9B-T5-B13-1180	Wall (Middle) - Curing & Formwork Dismantling	3	0	16-Apr-17 A	19-Apr-17 A		Calendar Day	■ Wall (Middle) - Curing & Formwork Dismantling																	
S9B-T5-B13-1185	Construct Roadside Barriers	6	2	12-Apr-17 A	21-Apr-17	-549	Calendar Day	■ Construct Roadside Barriers, Construct Roadside Barriers																	
S9B-T5-B13-1230	OHVD Base Slab (North) - Scaffolding Erection	10	10	22-Apr-17	01-May-17	-549	Calendar Day	■ OHVD Base Slab (North) - Scaffolding Erection, OHVD Base Slab (North) - Scaffolding Erection																	
S9B-T5-B13-1240	OHVD Base Slab (North) - Formwork & Rebar Fixing	7	7	29-Apr-17	05-May-17	-546	Calendar Day	■ OHVD Base Slab (North) - Formwork & Rebar Fixing, OHVD Base Slab (North) - Formwork & Rebar Fixing																	
S9B-T5-B13-1250	OHVD Base Slab (North) - Concrete & Curing	2	2	06-May-17	07-May-17	-546	Calendar Day	■ OHVD Base Slab (North) - Concrete & Curing, OHVD Base Slab (North) - Concrete & Curing																	

- ◆ Milestone
- ◆ Critical Milestones
- Current Works
- Critical Works
- Remaining Level of Effort

**CHUN WO - CRGL
JOINT VENTURE**

**CEDD CONTRACT NO. HK/2009/02
WD II - Central Wanchai Bypass at Wan Chai East (Contract 2)
3-MONTH ROLLING PROGRAMME (dd 20-Apr-17)**

Date	Revision	Checked	Approved
	Rev. Programme (08-Apr-...		

Activity ID	Activity Name	Ori Dur	Rem Dur	Scheduled/ Actual Start	Scheduled/ Actual Finish	Total Float	Calendar	2017																
								April				May				June				July				
								26	02	09	16	23	30	07	14	21	28	04	11	18	25	02	09	16
S10-T5-B7-1330	OHVD Base Slab (South) - Concrete & Curing	2	0	19-Apr-17 A	20-Apr-17 A		Calendar Day																	
S10-T5-B7-1340	OHVD Base Slab (South) - Hanger Wall & Scaffolding to Roof	3	3	20-Apr-17	22-Apr-17	-31	Calendar Day																	
S10-T5-B7-1350	Roof - Waterproofing	7	6	18-Apr-17 A	26-Apr-17	-34	Calendar Day																	
S10-T5-B7-1360	Roof - Rebar Fixing & Formwork	12	12	25-Apr-17	07-May-17	-34	Calendar Day																	
S10-T5-B7-1370	Roof - Concrete	1	1	07-May-17	08-May-17	-34	Calendar Day																	
S10-T5-B7-1380	Roof - Curing	12	12	08-May-17	21-May-17	-34	Calendar Day																	
S10-T5-B7-1390	Roof - Scaffolding Dismantling	7	7	21-May-17	28-May-17	-34	Calendar Day																	
Bay 6A - Roof only																								
S10-T5-B6A-1410	Roof - Waterproofing	7	3	16-Apr-17 A	22-Apr-17	-10	Calendar Day																	
S10-T5-B6A-1411	Roof - Rebar Fixing & Formwork	13	13	20-Apr-17	02-May-17	-10	Calendar Day																	
S10-T5-B6A-1412	Roof - Concrete	1	1	03-May-17	03-May-17	-10	Calendar Day																	
S10-T5-B6A-1413	Roof - Curing	12	12	04-May-17	16-May-17	-10	Calendar Day																	
S10-T5-B6A-1414	Roof - Scaffolding Dismantling	7	7	16-May-17	23-May-17	-1	Calendar Day																	
Bay 6																								
S10-T5-B6-1120	Wall (South) - Formwork	2	0	21-Mar-17 A	22-Mar-17 A		Calendar Day	Wall (South) - Formwork																
S10-T5-B6-1130	Wall (South) - Concrete	1	0	23-Mar-17 A	23-Mar-17 A		Calendar Day	Wall (South) - Concrete																
S10-T5-B6-1140	Wall (South) - Curing & Formwork Dismantling	3	0	24-Mar-17 A	26-Mar-17 A		Calendar Day	Wall (South) - Curing & Formwork Dismantling																
S10-T5-B6-1225	Construct Roadside Barriers	7	0	12-Feb-17 A	21-Mar-17 A		Calendar Day	Construct Roadside Barriers																
S10-T5-B6-1230	OHVD Base Slab (North) - Scaffolding Erection	10	0	15-Mar-17 A	24-Mar-17 A		Calendar Day	OHVD Base Slab (North) - Scaffolding Erection																
S10-T5-B6-1240	OHVD Base Slab (North) - Formwork & Rebar Fixing	7	0	25-Mar-17 A	11-Apr-17 A		Calendar Day	OHVD Base Slab (North) - Formwork & Rebar Fixing																
S10-T5-B6-1250	OHVD Base Slab (North) - Concrete & Curing	2	0	12-Apr-17 A	13-Apr-17 A		Calendar Day	OHVD Base Slab (North) - Concrete & Curing																
S10-T5-B6-1260	OHVD Base Slab (North) - Hanger Wall & Scaffolding to Roof	3	0	14-Apr-17 A	16-Apr-17 A		Calendar Day	OHVD Base Slab (North) - Hanger Wall & Scaffolding to Roof																
S10-T5-B6-1315	OHVD Base Slab (South) - Scaffolding Erection	10	0	29-Mar-17 A	06-Apr-17 A		Calendar Day	OHVD Base Slab (South) - Scaffolding Erection																
S10-T5-B6-1320	OHVD Base Slab (South) - Formwork & Rebar Fixing	7	0	07-Apr-17 A	18-Apr-17 A		Calendar Day	OHVD Base Slab (South) - Formwork & Rebar Fixing																
S10-T5-B6-1325	OHVD Base Slab (South) - Concrete & Curing	2	0	19-Apr-17 A	20-Apr-17	-28	Calendar Day	OHVD Base Slab (South) - Concrete & Curing																
S10-T5-B6-1330	OHVD Base Slab (South) - Hanger Wall & Scaffolding to Roof	3	3	20-Apr-17	22-Apr-17	-29	Calendar Day	OHVD Base Slab (South) - Hanger Wall & Scaffolding to Roof																
S10-T5-B6-1350	Roof - Waterproofing	7	3	16-Apr-17 A	22-Apr-17	-26	Calendar Day	Roof - Waterproofing																
S10-T5-B6-1360	Roof - Rebar Fixing & Formwork	11	9	18-Apr-17 A	01-May-17	-29	Calendar Day	Roof - Rebar Fixing & Formwork																
S10-T5-B6-1370	Roof - Concrete	1	1	02-May-17	02-May-17	-29	Calendar Day	Roof - Concrete																
S10-T5-B6-1380	Roof - Curing	12	12	03-May-17	15-May-17	-9	Calendar Day	Roof - Curing																
S10-T5-B6-1390	Roof - Scaffolding Dismantling	7	7	15-May-17	22-May-17	-1	Calendar Day	Roof - Scaffolding Dismantling																
Bay 5 (3 Cells)																								
S10-T5-B5-1225	Construct Roadside Barriers	7	0	13-Feb-17 A	05-Apr-17 A		Calendar Day	Construct Roadside Barriers																
S10-T5-B5-1230	OHVD Base Slab (North & Middle) - Scaffolding Erection	14	0	15-Mar-17 A	28-Mar-17 A		Calendar Day	OHVD Base Slab (North & Middle) - Scaffolding Erection																
S10-T5-B5-1240	OHVD Base Slab (North & Middle) - Formwork & Rebar Fixing	13	0	29-Mar-17 A	09-Apr-17 A		Calendar Day	OHVD Base Slab (North & Middle) - Formwork & Rebar Fixing																
S10-T5-B5-1250	OHVD Base Slab (North & Middle) - Concrete & Curing	2	0	10-Apr-17 A	11-Apr-17 A		Calendar Day	OHVD Base Slab (North & Middle) - Concrete & Curing																
S10-T5-B5-1260	OHVD Base Slab (North & Middle) - Hanger Wall & Scaffolding to Roof	3	0	12-Apr-17 A	14-Apr-17 A		Calendar Day	OHVD Base Slab (North & Middle) - Hanger Wall & Scaffolding to Roof																
S10-T5-B5-1310	OHVD Base Slab (South) - Scaffolding Erection	10	0	28-Mar-17 A	05-Apr-17 A		Calendar Day	OHVD Base Slab (South) - Scaffolding Erection																
S10-T5-B5-1320	OHVD Base Slab (South) - Formwork & Rebar Fixing	7	0	06-Apr-17 A	16-Apr-17 A		Calendar Day	OHVD Base Slab (South) - Formwork & Rebar Fixing																
S10-T5-B5-1330	OHVD Base Slab (South) - Concrete & Curing	2	0	17-Apr-17 A	18-Apr-17 A		Calendar Day	OHVD Base Slab (South) - Concrete & Curing																
S10-T5-B5-1340	OHVD Base Slab (South) - Hanger Wall & Scaffolding to Roof	3	2	19-Apr-17 A	21-Apr-17	-12	Calendar Day	OHVD Base Slab (South) - Hanger Wall & Scaffolding to Roof																
S10-T5-B5-1350	Roof - Waterproofing	7	2	19-Apr-17 A	21-Apr-17	-12	Calendar Day	Roof - Waterproofing																
S10-T5-B5-1360	Roof - Rebar Fixing & Formwork	14	14	21-Apr-17	05-May-17	-12	Calendar Day	Roof - Rebar Fixing & Formwork																
S10-T5-B5-1370	Roof - Concrete	1	1	05-May-17	05-May-17	-12	Calendar Day	Roof - Concrete																
S10-T5-B5-1380	Roof - Curing	12	12	06-May-17	18-May-17	-12	Calendar Day	Roof - Curing																
S10-T5-B5-1390	Roof - Scaffolding Dismantling	7	7	18-May-17	25-May-17	-4	Calendar Day	Roof - Scaffolding Dismantling																
Bay 4 (3 Cells)																								
S10-T5-B4-1100	Wall (South) - Waterproofing & Working Platform	4	0	19-Mar-17 A	22-Mar-17 A		Calendar Day	Wall (South) - Waterproofing & Working Platform																
S10-T5-B4-1110	Wall (South) - Rebar Fixing	3	0	23-Mar-17 A	25-Mar-17 A		Calendar Day	Wall (South) - Rebar Fixing																
S10-T5-B4-1120	Wall (South) - Formwork	2	0	26-Mar-17 A	27-Mar-17 A		Calendar Day	Wall (South) - Formwork																
S10-T5-B4-1130	Wall (South) - Concrete	1	0	28-Mar-17 A	28-Mar-17 A		Calendar Day	Wall (South) - Concrete																
S10-T5-B4-1140	Wall (South) - Curing & Formwork Dismantling	3	0	29-Mar-17 A	31-Mar-17 A		Calendar Day	Wall (South) - Curing & Formwork Dismantling																
S10-T5-B4-1230	OHVD Base Slab (North and Middle) - Scaffolding Erection	14	0	11-Mar-17 A	25-Mar-17 A		Calendar Day	OHVD Base Slab (North and Middle) - Scaffolding Erection																
S10-T5-B4-1240	OHVD Base Slab (North and Middle) - Formwork & Rebar Fixing	13	0	26-Mar-17 A	15-Apr-17 A		Calendar Day	OHVD Base Slab (North and Middle) - Formwork & Rebar Fixing																
S10-T5-B4-1250	OHVD Base Slab (North and Middle) - Concrete & Curing	2	0	16-Apr-17 A	17-Apr-17 A		Calendar Day	OHVD Base Slab (North and Middle) - Concrete & Curing																
S10-T5-B4-1260	OHVD Base Slab (North and Middle) - Hanger Wall & Scaffolding to Roof	3	0	18-Apr-17 A	20-Apr-17 A		Calendar Day	OHVD Base Slab (North and Middle) - Hanger Wall & Scaffolding to Roof																

- ◆ Milestone
- ◆ Critical Milestones
- █ Current Works
- █ Critical Works
- █ Remaining Level of Effort

**CHUN WO - CRGL
JOINT VENTURE**

**CEDD CONTRACT NO. HK/2009/02
WD II - Central Wanchai Bypass at Wan Chai East (Contract 2)
3-MONTH ROLLING PROGRAMME (dd 20-Apr-17)**

Date	Revision	Checked	Approved
	Rev. Programme (08-Apr-...		

Activity ID	Activity Name	Ori Dur	Rem Dur	Scheduled/ Actual Start	Scheduled/ Actual Finish	Total Float	Calendar	2017																
								April				May				June				July				
								26	02	09	16	23	30	07	14	21	28	04	11	18	25	02	09	16
S11-HH-4016	Reinstatement of HHR Flyover - Erect falsework and formwork for the walls of west abutment	4	4	26-Apr-17	02-May-17	-605	HK Working Day																	
S11-HH-4017	Reinstatement of HHR Flyover - Fix Re-bars for the walls of west abutment	3	3	27-Apr-17	02-May-17	-587	HK Working Day																	
S11-HH-4018	Reinstatement of HHR Flyover - Concreting for the walls of west abutment	1	1	02-May-17	04-May-17	-587	HK Working Day																	
S11-HH-4019	Reinstatement of HHR Flyover - Formwork stripping for the walls of west abutment	1	1	04-May-17	04-May-17	-587	HK Working Day																	
Hung Hing Road Flyover - Bay 2 (Middle) CH 3732-3747																								
S11-HH-5039	Reinstatement of HHR Flyover - Lay blinding layer for the bay 2 of HHR	1	1	20-Apr-17	20-Apr-17	-606	HK Working Day																	
S11-HH-5048	Reinstatement of HHR Flyover - Erect fmk for the base slab of bay 2 of HHR	5	5	29-Apr-17	06-May-17	-605	HK Working Day																	
S11-HH-5049	Reinstatement of HHR Flyover - Fix Re-bars for the base slab of bay 2 of HHR	3	3	04-May-17	06-May-17	-605	HK Working Day																	
S11-HH-5050	Reinstatement of HHR Flyover - Concreting for the base slab of bay 2 of HHR	1	1	06-May-17	08-May-17	-605	HK Working Day																	
S11-HH-5071	Reinstatement of HHR Flyover - Erect falsework and formwork for bay 2 of HHR	4	4	08-May-17	11-May-17	-605	HK Working Day																	
S11-HH-5072	Reinstatement of HHR Flyover - Fix Re-bars for the walls of bay 2 of HHR	3	3	09-May-17	11-May-17	-605	HK Working Day																	
S11-HH-5073	Reinstatement of HHR Flyover - Concreting for the walls of bay 2 of HHR	1	1	11-May-17	12-May-17	-605	HK Working Day																	
S11-HH-5075	Reinstatement of HHR Flyover - Formwork stripping for the walls of bay 2 of HHR	2	2	13-May-17	16-May-17	-605	HK Working Day																	
S11-HH-5077	Reinstatement of HHR Flyover - Filling inside structure and install sub-soil drain	5	5	16-May-17	20-May-17	-605	HK Working Day																	
S11-HH-5080	Reinstatement of HHR Flyover - Lay blinding layer for the transition slab	1	1	20-May-17	20-May-17	-605	HK Working Day																	
S11-HH-5085	Reinstatement of HHR Flyover - Erect formwork for the transition slab	2	2	20-May-17	23-May-17	-605	HK Working Day																	
S11-HH-5086	Reinstatement of HHR Flyover - Fix Re-bars for the transition slab	2	2	22-May-17	24-May-17	-605	HK Working Day																	
S11-HH-5087	Reinstatement of HHR Flyover - Concreting for the transition slab	1	1	24-May-17	25-May-17	-605	HK Working Day																	
Hung Hing Road Flyover - Bay 3 (East Side) CH 3747-3770																								
S11-HH-5140	Reinstatement of HHR Flyover - Lay blinding layer for the east abutment	1	1	20-Apr-17	20-Apr-17	-606	HK Working Day																	
S11-HH-5159	Reinstatement of HHR Flyover - Erect fmk for the base slab of east abutment	7	7	20-Apr-17	28-Apr-17	-606	HK Working Day																	
S11-HH-5160	Reinstatement of HHR Flyover - Fix Re-bars for the base slab of east abutment	5	5	22-Apr-17	28-Apr-17	-606	HK Working Day																	
S11-HH-5161	Reinstatement of HHR Flyover - Concreting for the base slab of east abutment	1	1	28-Apr-17	28-Apr-17	-606	HK Working Day																	
S11-HH-5172	Reinstatement of HHR Flyover - Erect falsework and formwork for the walls of east abutment	8	8	28-Apr-17	09-May-17	-606	HK Working Day																	
S11-HH-5173	Reinstatement of HHR Flyover - Fix Re-bars for the walls of east abutment	6	6	02-May-17	09-May-17	-606	HK Working Day																	
S11-HH-5174	Reinstatement of HHR Flyover - Concreting for the walls of east abutment	1	1	09-May-17	10-May-17	-606	HK Working Day																	
S11-HH-5176	Reinstatement of HHR Flyover - Formwork stripping for the walls of east abutment	2	2	10-May-17	12-May-17	-606	HK Working Day																	
Hung Hing Road Flyover - Deck Construction																								
S11-HH-4027	Reinstatement of HHR Flyover - Erect falsework and fmk for the bridge decking	10	10	12-May-17	23-May-17	-606	HK Working Day																	
S11-HH-4032	Reinstatement of HHR Flyover - Fix Re-bars for the bridge decking	8	8	17-May-17	25-May-17	-606	HK Working Day																	
S11-HH-4037	Reinstatement of HHR Flyover - Concreting for the bridge decking	1	1	25-May-17	26-May-17	-606	HK Working Day																	
S11-HH-4038	Reinstatement of HHR Flyover - Curing for the bridge decking	3	3	26-May-17	29-May-17	-672	Calendar Day																	
S11-HH-4047	Reinstatement of HHR Flyover - Dismantle falsework and fmk for the bridge decking	3	3	26-May-17	29-May-17	-606	HK Working Day																	
Hung Hing Road Flyover - Traffic Diversion and Road Furniture																								
S11-HH-4052	Reinstatement of HHR Flyover - Cover up all utilities	4	4	29-May-17	02-Jun-17	-672	Calendar Day																	
S11-HH-4055	Reinstatement of HHR Flyover - Lay drainage works and cross road ducts for the bridge	4	4	05-May-17	08-May-17	-653	Calendar Day																	
S11-HH-4056	Reinstatement of HHR Flyover - Place sub-base for the bridge	3	3	08-May-17	10-May-17	-653	Calendar Day																	
S11-HH-4057	Reinstatement of HHR Flyover - Lay asphalt and road markings	3	3	09-May-17	11-May-17	-653	Calendar Day																	
S11-HH-4059	Reinstatement of HHR Flyover - Install Road Furnitures for the bridge	4	4	27-May-17	30-May-17	-671	Calendar Day																	
S11-HH-4063	Reinstatement of HHR Flyover - Final Inspection of bridge and carry out traffic diversion	2	2	31-May-17	02-Jun-17	-672	Calendar Day																	
S11-HH-4064	Reinstatement of HHR Flyover - Traffic Diversion to reinstated bridge	0	0	02-Jun-17		-672	Calendar Day																	
S11-HH-4066	Reinstatement of HHR Flyover - Reinstated a drainage pipe along Temp Steel Bridges	25	25	05-Jun-17	03-Jul-17	-253	HK Working Day																	
S11-HH-4068	Reinstatement of HHR Flyover - Remove Temp Steel Bridge No. 1	43	43	05-Jun-17	21-Jul-17	-605	HK Working Day																	
S11-HH-4070	Reinstatement of HHR Flyover - Remove Temp Steel Bridge No. 2	32	32	08-Jul-17	10-Aug-17	-258	HK Working Day																	
S11-HH-4072	Reinstatement of HHR Flyover - Remove Temp Steel Bridge No. 3	31	31	05-Jun-17	08-Jul-17	-258	HK Working Day																	
Reinstatement of Box Culvert O																								
Box Culvert O Construction (Tunnel Section) - Bay 15A and Bay 16A																								
S11-BCO-2065	Box Culvert O Reinstatement - Construct 2m thk G200 rockfill bedding and blinding	6	0	01-Mar-17 A	06-Mar-17 A		HK Working Day																	
Box Culvert O Construction (South Portion) - Bay 12 to Bay 14																								
S11-BCO-2200	Box Culvert O Reinstatement - Fabricate Precast Units about 60 nos. (Construction Details liaising with AECOM)	90	90	03-Aug-17	01-Nov-17	-269	Calendar Day																	
Wan Shing Street Sewerage Works																								
S11-SW-1030	TTA Scheme at Wan Shing Street - Endorsement by ER	12	5	16-Mar-17 A	24-Apr-17	-231	HK Working Day																	
S11-SW-1032	TTA Preparation Works - Removal of Hoarding and paving temporary road at Hung Hing Street with road marking and sig	20	12	12-Apr-17 A	04-May-17	-233	HK Working Day																	
S11-SW-1040	Apply TTA for open trench excavation at Wan Shing Street	1	1	04-May-17	04-May-17	-233	HK Working Day																	
S11-SW-1060	Implement TTA Stage 1	2	2	04-May-17	05-May-17	-233	HK Working Day																	
S11-SW-1062	UU detection and excavate trial pit TH-HHR-04 at Wan Shing Street	4	4	12-May-17	17-May-17	-239	HK Working Day																	

- ◆ Milestone
- ◆ Critical Milestones
- █ Current Works
- █ Critical Works
- █ Remaining Level of Effort

**CHUN WO - CRGL
JOINT VENTURE**

CEDD CONTRACT NO. HK/2009/02

WD II - Central Wanchai Bypass at Wan Chai East (Contract 2)

3-MONTH ROLLING PROGRAMME (dd 20-Apr-17)

Date	Revision	Checked	Approved
	Rev. Programme (08-Apr-...		

Activity ID	Activity Name	Original Duration	Start	Finish	2017																	
					Apr			May			Jun			Jul								
Total		1791d	21-Mar-13 A	09-Feb-18																		
DWP-07 - (6) - Update Progress As of 20 Apr 17		1791d	21-Mar-13 A	09-Feb-18																		
Works in KD2		95d	01-Mar-17 A	03-Jun-17																		
Works in TS3-East		95d	01-Mar-17 A	03-Jun-17																		
Removal of Temporary Reclamation at TS3(E)		95d	01-Mar-17 A	03-Jun-17																		
TS3E Remaining Works & TS3E/TS3W, TS3E/TS2 Stitching Works		95d	01-Mar-17 A	03-Jun-17																		
West Bound Tunnel (W/B)		91d	01-Mar-17 A	30-May-17																		
Outstanding Reinforced Concrete Works		91d	01-Mar-17 A	30-May-17																		
A6570	General Cleaning Works for the Tunnel, CCTV and Pipe WaterJack Cleaning	10d	01-Mar-17 A	07-Apr-17 A																		
A6580	Joint Site Walk	5d	20-Apr-17	24-Apr-17																		
A6590	Handover Date	1d	30-May-17	30-May-17																		
Stitching of TS2 & TS3E (5.0 m Tunnel Length for Base Slab, Roof Slab, Approx. 15 m length for OHVD)		40d	20-Apr-17	29-May-17																		
A6650	TS2/TS3E OHVD (Hindrance: Falsework Erection and Rebar Lifting) - 10 days	23d	20-Apr-17	12-May-17																		
A6660	Falsework Removal for OHVD - 7 days	7d	23-May-17	29-May-17																		
Profile Barrier and Maintenance Walkway		8d	20-Apr-17	27-Apr-17																		
A6700	Install Precast Concrete Covers on Cable Trough (2 X 90m)	8d	20-Apr-17	27-Apr-17																		
East Bound Tunnel (E/B)		62d	06-Mar-17 A	03-Jun-17																		
Outstanding Reinforced Concrete Works		62d	06-Mar-17 A	03-Jun-17																		
A6950	General Cleaning Works for the Tunnel	25d	11-Mar-17 A	23-Mar-17 A																		
A6960	Joint Site Walk	5d	29-May-17	02-Jun-17																		
A6970	Handover Date	1d	03-Jun-17	03-Jun-17																		
Stitching of TS2 & TS3E (5.0 m Length for Base Slab, Roof Slab, Approx. 15 m length for OHVD)		56d	06-Mar-17 A	28-May-17																		
A6860	TS2/TS3E OHVD (Hindrance: Falsework Erection and Rebar Lifting) - 10 days	10d	06-Mar-17 A	11-May-17																		
A6870	Falsework Removal for OHVD - 7 days	7d	22-May-17	28-May-17																		
Profile Barrier and Maintenance Walkway		8d	24-Mar-17 A	31-Mar-17 A																		
A6910	Install Precast Concrete Covers on Cable Trough (2 X 90m)	8d	24-Mar-17 A	31-Mar-17 A																		
Works in KD7		81d	04-Mar-17 A	08-Jun-17																		
Works in TS3-West		81d	04-Mar-17 A	08-Jun-17																		
Tunnel Structure		81d	04-Mar-17 A	08-Jun-17																		
Earthwork Backfilling, ELS Removal and Water Recharging		38d	04-Mar-17 A	06-Apr-17 A																		
East Portion		38d	04-Mar-17 A	30-Mar-17 A																		
A2490	Stage 4 Backfilling- 25000 m3 (-14mPD~ -7.0 mPD, Bay 2- Bay 4) - 1000 m3 per day	19d	04-Mar-17 A	22-Mar-17 A																		
A2520	Stage 5 Backfilling ~ 15000 m3 (-30 mPD ~ -7.0 mPD, Bay 1) ~ 1000 m3 per day	10d	22-Mar-17 A	28-Mar-17 A																		
A2500	Removal of 2nd Layer ELS and Removal of Reprop inside Tunnel (Bay 2- Bay 4)	7d	23-Mar-17 A	26-Mar-17 A																		
A2510	Closure of wall opening in Bay 1 of CCT (Wall 4 and Wall 5)	14d	23-Mar-17 A	26-Mar-17 A																		
A2530	Removal of 2nd Layer ELS (Bay 1)	5d	29-Mar-17 A	30-Mar-17 A																		
West Portion		6d	10-Mar-17 A	20-Mar-17 A																		
A2550	Removal of 2nd Layer ELS - 6 days	6d	10-Mar-17 A	20-Mar-17 A																		
Water Recharge (CNY- 27/1- 2/2)		1d	31-Mar-17 A	06-Apr-17 A																		
A2560	Water Re-charge to ELS Cofferdam	1d	31-Mar-17 A	06-Apr-17 A																		
Skin Wall Removal Works between TS4/TS3W and Shaft D Closure		81d	23-Mar-17 A	08-Jun-17																		
A2590	Skin Wall Removal Works between TS4/TS3W - 20 days (2nd stage) - After Tunnel Roof Slab Completion - E/B and W/B	20d	23-Mar-17 A	09-May-17																		
A2600	Construction of Remaining Tunnel Structure between CH. 4260.2- 4265.2 at SOL T100 for Mainline E/B, W/B, SR8	30d	10-May-17	08-Jun-17																		

- Actual Work
- Remaining Work
- Critical Remaining Work
- ◆ Milestone

Date	Revision	Checked	Approved
20-Apr-17	DWP-07 (6) - 3 Months Rolling	FS	TL

Activity ID	Activity Name	Original Duration	Start	Finish	2017					
					Apr	May	Jun	Jul		
Removal Bulkhead at CH525 (TS3W / SR8 Junction)										
A6080	Remove Bulkhead between TS3W & SR8	37d	06-Mar-17 A	13-Apr-17 A	Remove Bulkhead between TS3W & SR8					
A5180	Remove Scaffolding of SR1R Roof	4d	22-Mar-17 A	25-Mar-17 A	of SR1R Roof					
Works in KD8										
TS3W - Remove Temporary Reclamation										
Stage 1 - North West Corner (Bay Z4-25 to Bay 20)										
A2660	Remove filled material to -4.35mPD at Bay Z4-25 to Bay 19 (6,500m3)	8d	09-Mar-17 A	24-Mar-17 A	Remove filled material to -4.35mPD at Bay Z4-25 to Bay 19 (6,500m3)					
A2670	Remove filled material to -4.35mPD at Bay Z4-22 to Z4-24 (4,500m3)	5d	25-Mar-17 A	14-Apr-17 A	Remove filled material to -4.35mPD at Bay Z4-22 to Z4-24 (4,500m3)					
A2680	Remove seawall blocks at Bay Z4-25 to Bay 20 (426 nos.)	8d	27-Mar-17 A	10-Apr-17 A	Remove seawall blocks at Bay Z4-25 to Bay 20 (426 nos.)					
A6260	Remove filled material to -7.0 mPD	4d	05-Apr-17 A	13-Apr-17 A	Remove filled material to -7.0 mPD					
Stage 2 - North to East Side (Bay 19 to Bay 11 + Bay 26 to Bay 28)										
A2690	Break concrete slab at Bay 19 to Bay 11 + Bay 26 to Bay 28 (2,500m2)	7d	24-Mar-17 A	31-Mar-17 A	Break concrete slab at Bay 19 to Bay 11 + Bay 26 to Bay 28 (2,500m2)					
A2700	Remove filled material to +2.8mPD (2,500m3)	7d	01-Apr-17 A	07-Apr-17 A	Remove filled material to +2.8mPD (2,500m3)					
Stage 3 - North to East Side (Bay 19 to bay 26)										
A2710	Completion of Recharging of Sea Water into TS3W Cofferdam	2d	31-Mar-17 A	04-Apr-17 A	Completion of Recharging of Sea Water into TS3W Cofferdam					
North West D-wall Opening										
A2720	Core D-wall cut holes at Panel DW02 to NA6 (27 nos.)	6d	07-Apr-17 A	10-Apr-17 A	Core D-wall cut holes at Panel DW02 to NA6 (27 nos.)					
A2730	Vertical cut at Panel DW02 to NA6 (19 nos.)	8d	14-Apr-17 A	20-Apr-17 A	Vertical cut at Panel DW02 to NA6 (19 nos.)					
A2740	Horizontal cut at Panel DW02 to NA6 (25 nos.)	8d	21-Apr-17 A	29-Apr-17 A	Horizontal cut at Panel DW02 to NA6 (25 nos.)					
North East & East										
A2750	Remove filled material to -4.35mPD (22,500m3)	9d	13-Apr-17 A	26-Apr-17	Remove filled material to -4.35mPD (22,500m3)					
A2760	Remove seawall blocks at Bay 19 to 11 & Bay 26 to 28 (1,335 nos.)	13d	20-Apr-17 A	29-Apr-17	Remove seawall blocks at Bay 19 to 11 & Bay 26 to 28 (1,335 nos.)					
A2770	Remove filled material to -7.0mPD (North & East side)	10d	29-Apr-17 A	01-May-17	Remove filled material to -7.0mPD (North & East side)					
Stage 4 - West & South Side (Remove Seawall Block Bay Z4-23 & 24, Excavate to -4.35mPD)										
West Side										
A2790	Remove seawall blocks at Bay Bay Z4-23 to Z4-24 (249 nos.)	5d	31-Mar-17 A	02-May-17	Remove seawall blocks at Bay Bay Z4-23 to Z4-24 (249 nos.)					
A2800	Remove filled material to -7.0mPD (West)	5d	03-May-17	07-May-17	Remove filled material to -7.0mPD (West)					
North East Side										
A2810	Core D-wall cut holes at Panel W1D1 to W1D32 (128 nos.) (North Side)	14d	19-Apr-17 A	26-Apr-17 A	Core D-wall cut holes at Panel W1D1 to W1D32 (128 nos.) (North Side)					
A2820	Vertical cut at Panel W1D1 to W1D32 (96 nos.) (North Side)	16d	27-Apr-17 A	08-May-17	Vertical cut at Panel W1D1 to W1D32 (96 nos.) (North Side)					
A2830	Horizontal cut at Panel W1D1 to W1D32 (128 nos.) (North Side)	20d	17-May-17	05-Jun-17	Horizontal cut at Panel W1D1 to W1D32 (128 nos.) (North Side)					
East Side										
A2840	Core D-wall cut holes at Panel TZ31 to TZ38 (32 nos.) (East Side)	10d	20-Apr-17 A	26-Apr-17 A	Core D-wall cut holes at Panel TZ31 to TZ38 (32 nos.) (East Side)					
A2850	Vertical cut at Panel TZ31 to TZ38 (24 nos.) (East Side)	9d	16-May-17	24-May-17	Vertical cut at Panel TZ31 to TZ38 (24 nos.) (East Side)					
A2860	Horizontal cut at Panel TZ31 to TZ38 (32 nos.) (East Side)	10d	25-May-17	03-Jun-17	Horizontal cut at Panel TZ31 to TZ38 (32 nos.) (East Side)					
South Side										
A2870	Remove filled material to -4.35mPD (41,300m3)	30d	20-Apr-17	19-May-17	Remove filled material to -4.35mPD (41,300m3)					
Stage 5 - West & South side (Reove Seawall Block Bay 24 7 25, Excavate to -7.0mPD)										
A2910	Core D-wall cut holes at Panel BWD2 to BWD9 (30 nos.) (West Side)	5d	12-Apr-17 A	17-Apr-17 A	Core D-wall cut holes at Panel BWD2 to BWD9 (30 nos.) (West Side)					
A2920	Vertical cut at Panel BWD2 to BWD9 (22 nos.) (West Side)	8d	08-May-17	15-May-17	Vertical cut at Panel BWD2 to BWD9 (22 nos.) (West Side)					
A2930	Horizontal cut at Panel BWD2 to BWD9 (29 nos.) (West Side)	8d	16-May-17	23-May-17	Horizontal cut at Panel BWD2 to BWD9 (29 nos.) (West Side)					
A2880	Remove seawall blocks at Bay 24, 25 (264 nos.) (South West)	6d	20-May-17	25-May-17	Remove seawall blocks at Bay 24, 25 (264 nos.) (South West)					
A2890	Remove seawall blocks at Bay 2 to 4 (550 nos.) (South East)	11d	20-May-17	30-May-17	Remove seawall blocks at Bay 2 to 4 (550 nos.) (South East)					
A2900	Remove filled material to -7.0mPD (South)	7d	31-May-17	06-Jun-17	Remove filled material to -7.0mPD (South)					

Activity ID	Activity Name	Original Duration	Start	Finish	2017											
					Apr	May	Jun	Jul								
Egress Passage - EP01		31d	13-Mar-17 A	24-Apr-17 A												
Bay C1		31d	13-Mar-17 A	14-Apr-17 A												
A7690	C1 - EP01 Wall Construction	9d	13-Mar-17 A	30-Mar-17 A	Wall Construction											
A7700	C1 - EP01 Roof Construction	8d	13-Mar-17 A	30-Mar-17 A	Roof Construction											
A8010	C1 - Dismantle Scaffolding of EP01 Roof Slab - 10 days Curing	14d	31-Mar-17 A	14-Apr-17 A	C1 - Dismantle Scaffolding of EP01 Roof Slab - 10 days Curing											
Bay C2		31d	13-Mar-17 A	14-Apr-17 A												
A7710	C2 - EP01 Wall Construction	9d	13-Mar-17 A	30-Mar-17 A	Wall Construction											
A7720	C2 - EP01 Roof Construction	8d	13-Mar-17 A	30-Mar-17 A	Roof Construction											
A8020	C2 - Dismantle Scaffolding of EP01 Roof Slab - 10 days Curing	14d	31-Mar-17 A	14-Apr-17 A	C2 - Dismantle Scaffolding of EP01 Roof Slab - 10 days Curing											
Bay C3		31d	20-Mar-17 A	24-Apr-17 A												
A7730	C3 - EP01 Wall Construction	9d	20-Mar-17 A	05-Apr-17 A	C3 - EP01 Wall Construction											
A7740	C3 - EP01 Roof Construction	8d	20-Mar-17 A	05-Apr-17 A	C3 - EP01 Roof Construction											
A8030	C3 - Dismantle Scaffolding of EP01 Roof Slab - 10 days Curing	14d	06-Apr-17 A	24-Apr-17 A	C3 - Dismantle Scaffolding of EP01 Roof Slab - 10 days Curing											
Bay C4		31d	20-Mar-17 A	24-Apr-17 A												
A7750	C4 - EP01 Wall Construction	9d	20-Mar-17 A	05-Apr-17 A	C4 - EP01 Wall Construction											
A7760	C4 - EP01 Roof Construction	8d	20-Mar-17 A	05-Apr-17 A	C4 - EP01 Roof Construction											
A8040	C4 - Dismantle Scaffolding of EP01 Roof Slab - 10 days Curing	14d	06-Apr-17 A	24-Apr-17 A	C4 - Dismantle Scaffolding of EP01 Roof Slab - 10 days Curing											
Utility Trough		27d	20-Apr-17	16-May-17												
Bay C1		16d	20-Apr-17	05-May-17												
A7790	RHS / C1 - Backing Concrete	4d	20-Apr-17	23-Apr-17	RHS / C1 - Backing Concrete											
A7800	RHS / C1 - Profile Barrier	4d	24-Apr-17	27-Apr-17	RHS / C1 - Profile Barrier											
A7770	LHS / C1 - Backing Concrete	4d	28-Apr-17	01-May-17	LHS / C1 - Backing Concrete											
A7780	LHS / C1 - Profile Barrier	4d	02-May-17	05-May-17	LHS / C1 - Profile Barrier											
Bay C2		16d	20-Apr-17	05-May-17												
A7830	RHS / C2 - Backing Concrete	4d	20-Apr-17	23-Apr-17	RHS / C2 - Backing Concrete											
A7840	RHS / C2 - Profile Barrier	4d	24-Apr-17	27-Apr-17	RHS / C2 - Profile Barrier											
A7810	LHS / C2 - Backing Concrete	4d	28-Apr-17	01-May-17	LHS / C2 - Backing Concrete											
A7820	LHS / C2 - Profile Barrier	4d	02-May-17	05-May-17	LHS / C2 - Profile Barrier											
Bay C3		16d	20-Apr-17	05-May-17												
A7870	RHS / C3 - Backing Concrete	4d	20-Apr-17	23-Apr-17	RHS / C3 - Backing Concrete											
A7880	RHS / C3 - Profile Barrier	4d	24-Apr-17	27-Apr-17	RHS / C3 - Profile Barrier											
A7850	LHS / C3 - Backing Concrete	4d	28-Apr-17	01-May-17	LHS / C3 - Backing Concrete											
A7860	LHS / C3 - Profile Barrier	4d	02-May-17	05-May-17	LHS / C3 - Profile Barrier											
Bay C4		16d	20-Apr-17	05-May-17												
A7910	RHS / C4 - Backing Concrete	4d	20-Apr-17	23-Apr-17	RHS / C4 - Backing Concrete											
A7920	RHS / C4 - Profile Barrier	4d	24-Apr-17	27-Apr-17	RHS / C4 - Profile Barrier											
A7890	LHS / C4 - Backing Concrete	4d	28-Apr-17	01-May-17	LHS / C4 - Backing Concrete											
A7900	LHS / C4 - Profile Barrier	4d	02-May-17	05-May-17	LHS / C4 - Profile Barrier											
Bay C5		16d	01-May-17	16-May-17												
A7950	RHS / C5 - Backing Concrete	4d	01-May-17	04-May-17	RHS / C5 - Backing Concrete											
A7960	RHS / C5 - Profile Barrier	4d	05-May-17	08-May-17	RHS / C5 - Profile Barrier											
A7930	LHS / C5 - Backing Concrete	4d	09-May-17	12-May-17	LHS / C5 - Backing Concrete											
A7940	LHS / C5 - Profile Barrier	4d	13-May-17	16-May-17	LHS / C5 - Profile Barrier											
SR8 (Zone B) - Ch.385.000 to Ch.317.500 - (Inside Victoria Park to Tunnel Portal)		77d	20-Apr-17	05-Jul-17												

Activity ID	Activity Name	Original Duration	Start	Finish	2017				
					Apr	May	Jun	Jul	
SR8 (Zone B) Tunnel - ELS / CCT / BF Works (7 Bays Ch. 385.000 to Ch.317.500)									
Portal Structure									
OHVD									
Bay B1 + B2 (CH338.625 to CH368)									
SR8_ZB_1390	Zone B - OHVD - Erect Scaffolding & Soffit Formwork	6d	20-Apr-17	25-Apr-17	Zone B - OHVD - Erect Scaffolding & Soffit Formwork				
SR8_ZB_1400	Zone B - Redrill & Install Rebar on Soffit of Roof Slab	10d	26-Apr-17	05-May-17	Zone B - Redrill & Install Rebar on Soffit of Roof Slab				
SR8_ZB_1420	Zone B - OHVD - Rebar Fixing for Slab & Hanger Wall of OHVD	4d	06-May-17	10-May-17	Zone B - OHVD - Rebar Fixing for Slab & Hanger Wall of OHVD				
SR8_ZB_1430	Zone B - OHVD Erect Hanger Wall Formwork for OHVD	2d	11-May-17	12-May-17	Zone B - OHVD Erect Hanger Wall Formwork for OHVD				
SR8_ZB_1440	Zone B - OHVD Place Concrete to OHVD Slab & Wall	1d	13-May-17	13-May-17	Zone B - OHVD Place Concrete to OHVD Slab & Wall				
SR8_ZB_1450	Zone B - OHVD Curing Period for OHVD Slab	10d	15-May-17	25-May-17	Zone B - OHVD Curing Period for OHVD Slab				
SR8_ZB_1460	Zone B - OHVD Remove Soffit Formwork & Scaffolding	5d	26-May-17	01-Jun-17	Zone B - OHVD Remove Soffit Formwork & Scaffolding				
Utility Trough									
Left Hand Side									
SR8_ZB_1570	Zone B - U trough (LHS) Bay 3	7d	10-Jun-17	17-Jun-17			Zone B - U trough (LHS) Bay 3		
SR8_ZB_1560	Zone B - U trough (LHS) Bay 2	7d	19-Jun-17	26-Jun-17			Zone B - U trough (LHS) Bay 2		
SR8_ZB_1550	Zone B - U trough (LHS) Bay 1	7d	27-Jun-17	05-Jul-17			Zone B - U trough (LHS) Bay 1		
Right Hand Side									
SR8_ZB_1600	Zone B - U trough (RHS) Bay 3	7d	02-Jun-17	09-Jun-17			Zone B - U trough (RHS) Bay 3		
SR8_ZB_1590	Zone B - U trough (RHS) Bay 2	7d	10-Jun-17	17-Jun-17			Zone B - U trough (RHS) Bay 2		
SR8_ZB_1580	Zone B - U trough (RHS) Bay 1	7d	19-Jun-17	26-Jun-17			Zone B - U trough (RHS) Bay 1		
Pump House									
Remining Works inside Pump Sump E									
SR8_ZB_1890	Steel Works Installation inside Pump Sump E	45d	20-Apr-17	03-Jun-17	Steel Works Installation inside Pump Sump E				
SR8_ZB_1900	Installation Manhole Covers for Pump Sump E	7d	04-Jun-17	10-Jun-17	Installation Manhole Covers for Pump Sump E				
SR8 (Zone A) - Ch 317.500 to Ch 210.000 - U-Structure & Slab (Victoria Park)									
RC CCT & Backfill Ch317.5000 to Ch240.000									
Structure									
Utility Through									
SR8_ZA_1260	Zone A - Utility Trough for Zone A (CH240 to CH317)	28d	22-Jan-17 A	26-May-17	Zone A - Utility Trough for Zone A (CH240 to CH317)				
Works in KD9 (Include Re-provisioning Works of KD4,KD5)									
External Works Under KD9									
Tsing Fung St - RW & Subway Extension & Toe Wall at Hing Fat St									
Retaining Wall + Toe Wall at Hing Fat Street									
Retaining Wall RW8D									
Bay 3(10m) to Bay 4(10m)									
RW8D_1220	RW8D (Bay 3 to Bay 4) - Sub-soil & Backfilling to Base Slab	6d	23-Jan-17 A	23-Mar-17 A	- Sub-soil & Backfilling to Base Slab				
Works along RW8D During Reopen Hing Fat Street Footpath to Public									
A4910	Close slow lane of HFS to cut coping of RW8D and subway	20d	01-Mar-17 A	26-Apr-17 A	Close slow lane of HFS to cut coping of RW8D and subway				
A4920	Lay temp bituminous pavement for road diversion (from RW8D to Subway)	3d	20-Apr-17	22-Apr-17	Lay temp bituminous pavement for road diversion (from RW8D to Subway)				
A4940	Install steel vehicle parapet on RW8C, subway and RW8D	10d	20-Apr-17	02-May-17	Install steel vehicle parapet on RW8C, subway and RW8D				
Retaining Walls RW8E, Sign Footings & Sewer Pipe (SK266G, SK539C, SK375B)									
A4615	Re-occupy Hing Fat Street Footpath as site Area	1d	20-Mar-17 A	20-Mar-17 A	Footpath as site Area				
A4620	Excavate and lay blinding layer of RW8E (Including ELS)	14d	19-Apr-17 A	08-May-17	Excavate and lay blinding layer of RW8E (Including ELS)				
A4880	DS16 - Sign Frame Installation	14d	20-Apr-17	03-May-17	DS16 - Sign Frame Installation				

Activity ID	Activity Name	Original Duration	Start	Finish	2017			
					Apr	May	Jun	Jul
A4650	MH2-70 to MH2-71(150 dia. foul sewer pipe)	12d	20-Apr-17	05-May-17		MH2-70 to MH2-71(150 dia. foul sewer pipe)		
A4630	Construction of RW8E and toe wall (2+1 bays, 32m long)	45d	09-May-17	30-Jun-17			Construction of RW8E and toe wall (2+1 bays, 32m long)	
A4640	Backfill and subsoil drainage system behind RW8E	14d	03-Jul-17	18-Jul-17			Backfill and subsoil drainage system behind RW8E	
A4670	MH2-72 to MH2-73	12d	19-Jul-17	01-Aug-17				MH2-72 to MH2-73
Storm Drain Pipe behind RW8C along Tsing Fung Street (SK547A)		42d	20-Apr-17	10-Jun-17				
A4540	Modified MH shaft A2 at extg box culvert near MH TFS-04A	14d	20-Apr-17*	08-May-17		Modified MH shaft A2 at extg box culvert near MH TFS-04A		
A6410	MHTFS-06 to extg MH A3 (at slow lane of TFS)	14d	09-May-17	24-May-17		MHTFS-06 to extg MH A3 (at slow lane of TFS)		
A8050	MHTFS-05 to extg MH A3 (gully)	14d	25-May-17	10-Jun-17			MHTFS-05 to extg MH A3 (gully)	
Sign Footings at Victoria Park		75d	20-Apr-17	20-Jul-17				
A4570	Construction of 5m CCTV, AID, OHVD, TSG, luminance meter at verge inside VP	60d	20-Apr-17*	03-Jul-17			Construction of 5m CCTV, AID, OHVD, TSG, luminance meter at verge inside VP	
A4580	All drawpits (ATC, E&M and lighting) and ductings at verge inside VP (SK375B)	60d	10-May-17	20-Jul-17			All drawpits (ATC, E&M and lighting) and ductings at verge inside VP (SK375B)	
Boundary Fence, Type 2 Railing Footings & Fence Wall From RW8C to Zone B		242d	12-Dec-16 A	11-Sep-17				
A8070	Fence wall between BGO and Zone A (78.2m)	90d	12-Dec-16 A	03-Jul-17			Fence wall between BGO and Zone A (78.2m)	
A4700	Construction of boundary fence from RW8C toe wall to 15m CCTV high mast (approx. 53m)	50d	19-Dec-16 A	20-May-17		Construction of boundary fence from RW8C toe wall to 15m CCTV high mast (approx. 53m)		
A4710	Modification/ Re-construction of extg type 2 railing footing in front of RW8C (approx. 40m)	60d	10-Feb-17 A	01-Aug-17			Modification/ Re-construction of extg type 2 railing footing in front of RW8C (approx. 40m)	
A4720	Construction of boundary fence from 15m CCTV high mast to Zone A at CH210 (approx. 50m)	50d	22-May-17	20-Jul-17			Construction of boundary fence from 15m CCTV high mast to Zone A at CH210 (approx. 50m)	
A4730	Construction of boundary fence near nursery compound (approx. 167m, after completion of MH 2-73)	90d	27-May-17	11-Sep-17			Construction of boundary fence near nursery compound (approx. 167m, after completion of MH 2-73)	
Other Storm, Sewerage Pipe & Irrigation System in VP (SK336E, SK539D)		141d	21-Feb-17 A	07-Aug-17				
A4770	MH2-71 to TFS-06 via MH2-72 and MH 2-73 (300 dia. concrete pipe)	40d	21-Feb-17 A	26-May-17		MH2-71 to TFS-06 via MH2-72 and MH 2-73 (300 dia. concrete pipe)		
A4740	FMH-B01 to Extg 1-40 (5 MHs and 7 foul sewer PE pipeline)	90d	20-Apr-17	07-Aug-17			FMH-B01 to Extg 1-40 (5 MHs and 7 foul sewer PE pipeline)	
A4970	Irrigation Main Laying	14d	27-May-17	09-Jun-17		Irrigation Main Laying		
A4760	MHB (beside pump sump E) to MH2-70 (300 dia. stormwater pipeline)	14d	27-May-17	13-Jun-17			MHB (beside pump sump E) to MH2-70 (300 dia. stormwater pipeline)	
A4980	Water Points Installation	14d	10-Jun-17	23-Jun-17			Water Points Installation	
Preparation Works before Implementation TTA at Central Median		141d	02-Feb-17 A	20-Jul-17				
A4795	Excavate to formation level and lay subbase, fix K1 kerb along TFS	14d	02-Feb-17 A	05-May-17		Excavate to formation level and lay subbase, fix K1 kerb along TFS		
A4890	Laying Ducting Cross Access Ramp Down to Zone C SR8 Tunnel	60d	20-Apr-17	18-Jun-17			Laying Ducting Cross Access Ramp Down to Zone C SR8 Tunnel	
A4930	Shifting Site Entrance 6A	4d	19-Jun-17	22-Jun-17			Shifting Site Entrance 6A	
A4950	Laying Ducting in New SR8 Approaching Island	14d	23-Jun-17	06-Jul-17			Laying Ducting in New SR8 Approaching Island	
A5020	Forming Island Including Sub-base & Kerbing	14d	07-Jul-17	20-Jul-17			Forming Island Including Sub-base & Kerbing	
Reverting Traffic for IEC,VP Rd & TF St & Seawall Reinstatement (KD9)		98d	27-Mar-17 A	13-Aug-17				
TTA Revert Traffic Back to Original Alignment		98d	27-Mar-17 A	13-Aug-17				
Preparation Works - Backfill of Zone C to Top of Tunnel Structure		59d	27-Mar-17 A	16-Jun-17				
A5790	Waterproofing & Screeding to Roof	4d	27-Mar-17 A	14-May-17		Waterproofing & Screeding to Roof		
A5800	Load Transfer for King Post	6d	05-Apr-17 A	20-May-17		Load Transfer for King Post		
A5820	Zone C - Bay C1 to C5 Backfill to Formation & Remove Struts SL1 to SL3 (Up to +2.5mPD)	44d	10-Apr-17 A	16-Jun-17			Zone C - Bay C1 to C5 Backfill to Formation & Remove Struts SL1 to SL3 (Up to +2.5mPD)	
A5780	Curing to Roof Slab of Zone C	3d	08-May-17	10-May-17		Curing to Roof Slab of Zone C		
A5810	Make Good Box-out Left by King Post	2d	21-May-17	22-May-17		Make Good Box-out Left by King Post		
East Bound TTA - IEC East Bound, Victoria Park Road & Footpath along Sea Side		30d	17-Jun-17	16-Jul-17				
Stage 1 - IEC (East Bound)		30d	17-Jun-17	16-Jul-17				
A5240	IEC/EB - Construct Footing of Sign Gantry & Wing Wall	17d	17-Jun-17	03-Jul-17			IEC/EB - Construct Footing of Sign Gantry & Wing Wall	
A5260	IEC/EB - Backfill to Formation Level (Approx. 2.2mPD to +3.9mPD)	5d	17-Jun-17	21-Jun-17			IEC/EB - Backfill to Formation Level (Approx. 2.2mPD to +3.9mPD)	
A5270	IEC/EB - Reconstruct Wing Wall of Abutment M (approx. 6m)	10d	17-Jun-17	26-Jun-17			IEC/EB - Reconstruct Wing Wall of Abutment M (approx. 6m)	
A5280	IEC/EB - Cast Central Median	21d	17-Jun-17	07-Jul-17			IEC/EB - Cast Central Median	
A5310	IEC/EB - Remove Temporary Utilities Supports at IEC	3d	17-Jun-17	19-Jun-17			IEC/EB - Remove Temporary Utilities Supports at IEC	

Activity ID	Activity Name	Original Duration	Start	Finish	2017			
					Apr	May	Jun	Jul
VP_NC_1140	E&M Issue P.O. / Manufacturing / Fabrication	15d	20-Jan-17 A	22-May-17	E&M Issue P.O. / Manufacturing / Fabrication			
VP_NC_1150	E&M Materail Delivery	30d	23-May-17	27-Jun-17	E&M Materail Delivery			
Shop Drawing		30d	20-Apr-17	26-May-17				
VP_NC_1170	E&M Shop Drawing - ER Review and Approval	30d	20-Apr-17	26-May-17	E&M Shop Drawing - ER Review and Approval			
Nursery compound		125d	09-Mar-17 A	06-Sep-17				
A4410	Concreting of two concrete plinths, 150 thick curbs and 1450H parapet wall above roof slab	7d	09-Mar-17 A	30-Mar-17 A	g of two concrete plinths, 150 thick curbs and 1450H parapet wall above roof slab			
A4420	ABWF, Plumbing Works, waterproofing and E&M works	60d	05-Apr-17 A	06-Sep-17				
KD11, KD12, KD13, KD18 Establishment Works for Landscape Softworks		1087d	23-Feb-15 A	09-Feb-18				
KD11 - Section 7A: Portion XIV & XV (Victoria Park Open Space)		885d	23-Feb-15 A	09-Feb-18				
EW_1000	Establishment Works - for Landscape Softworks and transplanted trees in Portion XIV & XV	901d	23-Feb-15 A	09-Feb-18				
KD12 - Section 7B: Portion VI & VII (Reprov. Bowling Green Area)		177d	03-Dec-15 A	20-Apr-17				
EW_1010	Establishment Works - for Landscape Softworks and transplanted trees in Portion VI & VII	177d	03-Dec-15 A	20-Apr-17	Establishment Works - for Landscape Softworks and transplanted trees in Portion VI & VII			
KD10 - Preservation and Protection of Trees		1088d	21-Mar-13 A	20-Apr-17				
PPT_0000	Preservation and Protection of Existing Trees	1088d	21-Mar-13 A	20-Apr-17	Preservation and Protection of Existing Trees			
KD15 & KD8 - Mooring Components Upkeep (CBTS and ATS)		980d	15-May-14 A	20-Apr-17				
MAR_3020	Mooring Upkeep at Portion X(10) & XVI(16) - CBTS	979d	15-May-14 A	20-Apr-17	Mooring Upkeep at Portion X(10) & XVI(16) - CBTS			
Works for Public Works Regional Laboratory (North Lantau) - KD1, KD16, KD17		1301d	19-Jul-13 A	21-Nov-17				
KD17 - Maintenance and Upkeep of New PWRL (Portion XVII)		1301d	19-Jul-13 A	21-Nov-17				
PWRL_1050	Maintenance/ Upkeep of New PWRL	1301d	19-Jul-13 A	21-Nov-17				

Activity ID	Activity Name	Original Duration	Start	Finish	2017											
					May			Jun			Jul			Aug		
Total		1791d	21-Mar-13 A	10-Mar-18												
DWP-07 - (6) - Update Progress As of 20 May 17		1791d	21-Mar-13 A	10-Mar-18												
Works in KD2		93d	06-Mar-17 A	04-Jul-17												
Works in TS3-East		93d	06-Mar-17 A	04-Jul-17												
Removal of Temporary Reclamation at TS3(E)		93d	06-Mar-17 A	04-Jul-17												
TS3E Remaining Works & TS3E/TS3W, TS3E/TS2 Stitching Works		93d	06-Mar-17 A	04-Jul-17												
West Bound Tunnel (W/B)		41d	21-May-17	30-Jun-17												
Outstanding Reinforced Concrete Works		41d	21-May-17	30-Jun-17												
A6580	Joint Site Walk	5d	21-May-17	25-May-17	Joint Site Walk											
A6590	Handover Date	1d	30-Jun-17	30-Jun-17	Handover Date											
Stitching of TS2 & TS3E (5.0 m Tunnel Length for Base Slab, Roof Slab, Approx. 15 m length for OHVD)		40d	21-May-17	29-Jun-17												
A6650	TS2/TS3E OHVD (Hindrance: Falsework Erection and Rebar Lifting) - 10 days	23d	21-May-17	12-Jun-17	TS2/TS3E OHVD (Hindrance: Falsework Erection and Rebar Lifting) - 10 days											
A6660	Falsework Removal for OHVD - 7 days	7d	23-Jun-17	29-Jun-17	Falsework Removal for OHVD - 7 days											
Profile Barrier and Maintenance Walkway		8d	21-May-17	28-May-17												
A6700	Install Precast Concrete Covers on Cable Trough (2 X 90m)	8d	21-May-17	28-May-17	Install Precast Concrete Covers on Cable Trough (2 X 90m)											
East Bound Tunnel (E/B)		93d	06-Mar-17 A	04-Jul-17												
Outstanding Reinforced Concrete Works		93d	06-Mar-17 A	04-Jul-17												
A6960	Joint Site Walk	5d	29-Jun-17	03-Jul-17	Joint Site Walk											
A6970	Handover Date	1d	04-Jul-17	04-Jul-17	Handover Date											
Stitching of TS2 & TS3E (5.0 m Length for Base Slab, Roof Slab, Approx. 15 m length for OHVD)		87d	06-Mar-17 A	28-Jun-17												
A6860	TS2/TS3E OHVD (Hindrance: Falsework Erection and Rebar Lifting) - 10 days	10d	06-Mar-17 A	11-Jun-17	TS2/TS3E OHVD (Hindrance: Falsework Erection and Rebar Lifting) - 10 days											
A6870	Falsework Removal for OHVD - 7 days	7d	22-Jun-17	28-Jun-17	Falsework Removal for OHVD - 7 days											
Works in KD7		81d	23-Mar-17 A	19-Jun-17												
Works in TS3-West		81d	23-Mar-17 A	19-Jun-17												
Tunnel Structure		81d	23-Mar-17 A	19-Jun-17												
Skin Wall Removal Works between TS4/TS3W and Shaft D Closure		81d	23-Mar-17 A	19-Jun-17												
A2590	Skin Wall Removal Works between TS4/TS3W - 20 days (2nd stage) - After Tunnel Roof Slab Completion - E/B and W/B	20d	23-Mar-17 A	30-May-17 A	Skin Wall Removal Works between TS4/TS3W - 20 days (2nd stage) - After Tunnel Roof Slab Completion - E/B and W/B											
A2600	Construction of Remaining Tunnel Structure between CH. 4260.2- 4265.2 at SOL T100 for Mainline E/B, W/B, SR8	30d	10-May-17 A	19-Jun-17	Construction of Remaining Tunnel Structure between CH. 4260.2- 4265.2 at SOL T100 for Mainline E/B, W/B, SR8											
Works in KD8		127d	31-Mar-17 A	24-Aug-17												
TS3W - Remove Temporary Reclamation		127d	31-Mar-17 A	24-Aug-17												
Stage 3 - North to East Side (Bay 19 to bay 26)		16d	14-Apr-17 A	29-Apr-17 A												
North West D-wall Opening		16d	14-Apr-17 A	29-Apr-17 A												
A2730	Vertical cut at Panel DW02 to NA6 (19 nos.)	8d	14-Apr-17 A	20-Apr-17 A	NA6 (19 nos.)											
A2740	Horizontal cut at Panel DW02 to NA6 (25 nos.)	8d	21-Apr-17 A	29-Apr-17 A	cut at Panel DW02 to NA6 (25 nos.)											
Stage 4 - West & South Side (Remove Seawall Block Bay Z4-23 & 24, Excavate to -4.35mPD)		76d	31-Mar-17 A	15-Jun-17												
West Side		49d	31-Mar-17 A	22-May-17 A												
A2790	Remove seawall blocks at Bay Bay Z4-23 to Z4-24 (249 nos.)	5d	31-Mar-17 A	15-May-17 A	Remove seawall blocks at Bay Bay Z4-23 to Z4-24 (249 nos.)											
A2800	Remove filled material to -7.0mPD (West)	5d	22-Apr-17 A	22-May-17 A	Remove filled material to -7.0mPD (West)											
North East Side		48d	19-Apr-17 A	31-May-17 A												
A2810	Core D-wall cut holes at Panel W1D1 to W1D32 (128 nos.) (North Side)	14d	19-Apr-17 A	26-Apr-17 A	holes at Panel W1D1 to W1D32 (128 nos.) (North Side)											
A2820	Vertical cut at Panel W1D1 to W1D32 (96 nos.) (North Side)	16d	27-Apr-17 A	17-May-17 A	Vertical cut at Panel W1D1 to W1D32 (96 nos.) (North Side)											
A2830	Horizontal cut at Panel W1D1 to W1D32 (128 nos.) (North Side)	20d	06-May-17 A	31-May-17 A	Horizontal cut at Panel W1D1 to W1D32 (128 nos.) (North Side)											
East Side		64d	20-Apr-17 A	31-May-17 A												

- Actual Work
- Remaining Work
- Critical Remaining Work
- ◆ Milestone

Date	Revision	Checked	Approved
20-May-17	DWP-07 (6) - 3 Months Rolling	FS	TL



Activity ID	Activity Name	Original Duration	Start	Finish	2017				
					May	Jun	Jul	Aug	
A2840	Core D-wall cut holes at Panel TZ31 to TZ38 (32 nos.) (East Side)	10d	20-Apr-17 A	26-Apr-17 A	Vertical cut at Panel TZ31 to TZ38 (32 nos.) (East Side)				
A2850	Vertical cut at Panel TZ31 to TZ38 (24 nos.) (East Side)	9d	11-May-17 A	24-May-17 A	Vertical cut at Panel TZ31 to TZ38 (24 nos.) (East Side)				
A2860	Horizontal cut at Panel TZ31 to TZ38 (32 nos.) (East Side)	10d	23-May-17 A	31-May-17 A	Horizontal cut at Panel TZ31 to TZ38 (32 nos.) (East Side)				
South Side		30d	12-May-17 A	15-Jun-17					
A2870	Remove filled material to -4.35mPD (41,300m3)	30d	12-May-17 A	15-Jun-17	Remove filled material to -4.35mPD (41,300m3)				
Stage 5 - West & South side (Reeve Seawall Block Bay 24 7 25, Excavate to -7.0mPD)		44d	26-Apr-17 A	03-Jul-17					
A2920	Vertical cut at Panel BWD2 to BWD9 (22 nos.) (West Side)	8d	26-Apr-17 A	02-May-17 A	Vertical cut at Panel BWD2 to BWD9 (22 nos.) (West Side)				
A2930	Horizontal cut at Panel BWD2 to BWD9 (29 nos.) (West Side)	8d	06-May-17 A	21-May-17 A	Horizontal cut at Panel BWD2 to BWD9 (29 nos.) (West Side)				
A2880	Remove seawall blocks at Bay 24, 25 (264 nos.) (South West)	6d	21-May-17 A	21-Jun-17	Remove seawall blocks at Bay 24, 25 (264 nos.) (South West)				
A2890	Remove seawall blocks at Bay 2 to 4 (550 nos.) (South East)	11d	16-Jun-17	26-Jun-17	Remove seawall blocks at Bay 2 to 4 (550 nos.) (South East)				
A2900	Remove filled material to -7.0mPD (South)	7d	27-Jun-17	03-Jul-17	Remove filled material to -7.0mPD (South)				
Stage 6 - West & South Side (Saw Cut D-wall + Shaft D)		70d	12-Apr-17 A	27-Jul-17					
A2950	Core D-wall cut holes at Panel W2D1 to W2D18 (72 nos.) (South West)	9d	12-Apr-17 A	04-Jul-17	Core D-wall cut holes at Panel W2D1 to W2D18 (72 nos.) (South West)				
A2940	Remove fill material to -7.0mPD around shaft D	5d	23-Apr-17 A	26-Apr-17 A	Remove fill material to -7.0mPD around shaft D				
A2960	Vertical cut at Panel W2D1 to W2D18 (54 nos.) (South West)	18d	26-Apr-17 A	04-Jul-17	Vertical cut at Panel W2D1 to W2D18 (54 nos.) (South West)				
A2970	Horizontal cut at Panel W2D1 to W2D18 (72 nos.) (South West)	18d	04-Jul-17	21-Jul-17	Horizontal cut at Panel W2D1 to W2D18 (72 nos.) (South West)				
A2980	Core D-wall cut holes at Panel W2D23 to W2D34 (50 nos.) (South East)	10d	04-Jul-17	13-Jul-17	Core D-wall cut holes at Panel W2D23 to W2D34 (50 nos.) (South East)				
A2990	Vertical cut at Panel W2D23 to W2D34 (38 nos.) (South East)	13d	08-Jul-17	20-Jul-17	Vertical cut at Panel W2D23 to W2D34 (38 nos.) (South East)				
A3000	Horizontal cut at Panel W2D23 to W2D34 (50 nos.) (South East)	13d	15-Jul-17	27-Jul-17	Horizontal cut at Panel W2D23 to W2D34 (50 nos.) (South East)				
Stage 7 - West & South Side (Saw Cut Shaft D, Excavate to -7.0mPD at SR8)		70d	26-Apr-17 A	03-Aug-17					
A3010	Vertical cut at Shaft D (14 nos.)	10d	26-Apr-17 A	30-Apr-17 A	Vertical cut at Shaft D (14 nos.)				
A3020	Horizontal cut at Shaft D (14 nos.)	5d	28-Apr-17 A	04-May-17 A	Horizontal cut at Shaft D (14 nos.)				
A3030	Remove filled material to -7.0mPD at SR8	7d	28-Jul-17	03-Aug-17	Remove filled material to -7.0mPD at SR8				
Stage 8 - South East & West Side (Remove Seawall Block Bay Z4-22 to Bay 23, Saw Cut D-wall at SR8)		96d	21-May-17	24-Aug-17					
South West Side		42d	21-May-17	01-Jul-17					
A3040	Remove seawall blocks at Bay Z4-22 to Bay 23 (741 nos.)	15d	21-May-17	04-Jun-17	Remove seawall blocks at Bay Z4-22 to Bay 23 (741 nos.)				
A3050	Remove filled material to -7.0mPD (South West)	8d	05-Jun-17	12-Jun-17	Remove filled material to -7.0mPD (South West)				
A3060	Vertical cut at Panel BWD10 to SA7 (26 nos.) (South West)	9d	13-Jun-17	21-Jun-17	Vertical cut at Panel BWD10 to SA7 (26 nos.) (South West)				
A3070	Horizontal cut at Panel BWD10 to SA7 (37 nos.) (South West)	10d	22-Jun-17	01-Jul-17	Horizontal cut at Panel BWD10 to SA7 (37 nos.) (South West)				
SR08 - West Wall		21d	04-Aug-17	24-Aug-17					
A3080	Vertical cut at Panel W4D1 to W4D11 (28 nos.) (SR8)	10d	04-Aug-17	13-Aug-17	Vertical cut at Panel W4D1 to W4D11 (28 nos.) (SR8)				
A3090	Horizontal cut at Panel W4D1 to W4D11 (39 nos.) (SR8)	11d	14-Aug-17	24-Aug-17	Horizontal cut at Panel W4D1 to W4D11 (39 nos.) (SR8)				
SR08 - East Wall		19d	04-Aug-17	22-Aug-17					
A7010	Vertical cut at Panel W4D1 to W4D11 (26 nos.)	9d	04-Aug-17	12-Aug-17	Vertical cut at Panel W4D1 to W4D11 (26 nos.)				
A7020	Horizontal cut at Panel W3D1 to W3D7 (36 nos.)	10d	13-Aug-17	22-Aug-17	Horizontal cut at Panel W3D1 to W3D7 (36 nos.)				
Works in KD6		225d	22-Jan-17 A	15-Jul-17					
Works in SR8 (Open Cut Method)		225d	22-Jan-17 A	15-Jul-17					
SR8 (Zone C) - Ch. 528 to Ch. 368		177d	23-Mar-17 A	05-Jun-17					
Zone C - Tunnel Structure		177d	23-Mar-17 A	05-Jun-17					
200mm Thick OHVD Slab & 400mm Thick Hanger Wall		9d	21-May-17	29-May-17					
Bay C6		9d	21-May-17	29-May-17					
A7570	C6 - Construct OHVD Slab & Hanger Wall	9d	21-May-17	29-May-17	C6 - Construct OHVD Slab & Hanger Wall				
1.2m Thick Roof Slab		9d	23-Mar-17 A	16-May-17 A					
Bay C6		9d	23-Mar-17 A	16-May-17 A					

Activity ID	Activity Name	Original Duration	Start	Finish	2017			
					May	Jun	Jul	Aug
A7630	C6 - Partial Roof + Up Stand Wall Construction for Access Shaft	9d	23-Mar-17 A	16-May-17 A	C6 - Partial Roof + Up Stand Wall Construction for Access Shaft			
Removal of Roof Falsework - 10 days Curing		4d	23-May-17 A	27-May-17 A				
A7680	C6 - Removal of Falsework of Roof slab	4d	23-May-17 A	27-May-17 A	C6 - Removal of Falsework of Roof slab			
Egress Passage - EP01		14d	06-Apr-17 A	24-Apr-17 A				
Bay C3		14d	06-Apr-17 A	24-Apr-17 A				
A8030	C3 - Dismantle Scaffolding of EP01 Roof Slab - 10 days Curing	14d	06-Apr-17 A	24-Apr-17 A	Dismantling of EP01 Roof Slab - 10 days Curing			
Bay C4		14d	06-Apr-17 A	24-Apr-17 A				
A8040	C4 - Dismantle Scaffolding of EP01 Roof Slab - 10 days Curing	14d	06-Apr-17 A	24-Apr-17 A	Dismantling of EP01 Roof Slab - 10 days Curing			
Utility Trough		16d	21-May-17	05-Jun-17				
Bay C1		16d	21-May-17	05-Jun-17				
A7790	RHS / C1 - Backing Concrete	4d	21-May-17	24-May-17	RHS / C1 - Backing Concrete			
A7800	RHS / C1 - Profile Barrier	4d	25-May-17	28-May-17	RHS / C1 - Profile Barrier			
A7770	LHS / C1 - Backing Concrete	4d	29-May-17	01-Jun-17	LHS / C1 - Backing Concrete			
A7780	LHS / C1 - Profile Barrier	4d	02-Jun-17	05-Jun-17	LHS / C1 - Profile Barrier			
Bay C2		16d	21-May-17	05-Jun-17				
A7830	RHS / C2 - Backing Concrete	4d	21-May-17	24-May-17	RHS / C2 - Backing Concrete			
A7840	RHS / C2 - Profile Barrier	4d	25-May-17	28-May-17	RHS / C2 - Profile Barrier			
A7810	LHS / C2 - Backing Concrete	4d	29-May-17	01-Jun-17	LHS / C2 - Backing Concrete			
A7820	LHS / C2 - Profile Barrier	4d	02-Jun-17	05-Jun-17	LHS / C2 - Profile Barrier			
Bay C3		16d	21-May-17	05-Jun-17				
A7870	RHS / C3 - Backing Concrete	4d	21-May-17	24-May-17	RHS / C3 - Backing Concrete			
A7880	RHS / C3 - Profile Barrier	4d	25-May-17	28-May-17	RHS / C3 - Profile Barrier			
A7850	LHS / C3 - Backing Concrete	4d	29-May-17	01-Jun-17	LHS / C3 - Backing Concrete			
A7860	LHS / C3 - Profile Barrier	4d	02-Jun-17	05-Jun-17	LHS / C3 - Profile Barrier			
Bay C4		16d	21-May-17	05-Jun-17				
A7910	RHS / C4 - Backing Concrete	4d	21-May-17	24-May-17	RHS / C4 - Backing Concrete			
A7920	RHS / C4 - Profile Barrier	4d	25-May-17	28-May-17	RHS / C4 - Profile Barrier			
A7890	LHS / C4 - Backing Concrete	4d	29-May-17	01-Jun-17	LHS / C4 - Backing Concrete			
A7900	LHS / C4 - Profile Barrier	4d	02-Jun-17	05-Jun-17	LHS / C4 - Profile Barrier			
Bay C5		16d	21-May-17	05-Jun-17				
A7950	RHS / C5 - Backing Concrete	4d	21-May-17	24-May-17	RHS / C5 - Backing Concrete			
A7960	RHS / C5 - Profile Barrier	4d	25-May-17	28-May-17	RHS / C5 - Profile Barrier			
A7930	LHS / C5 - Backing Concrete	4d	29-May-17	01-Jun-17	LHS / C5 - Backing Concrete			
A7940	LHS / C5 - Profile Barrier	4d	02-Jun-17	05-Jun-17	LHS / C5 - Profile Barrier			
SR8 (Zone B) - Ch.385.000 to Ch.317.500 - (Inside Victoria Park to Tunnel Portal)		56d	09-May-17 A	15-Jul-17				
SR8 (Zone B) Tunnel - ELS / CCT / BF Works (7 Bays Ch. 385.000 to Ch.317.500)		56d	09-May-17 A	15-Jul-17				
Portal Structure		56d	09-May-17 A	15-Jul-17				
OHVD		23d	09-May-17 A	12-Jun-17				
Bay B1 + B2 (CH338.625 to CH368)		23d	09-May-17 A	12-Jun-17				
SR8_ZB_1390	Zone B - OHVD - Erect Scaffolding & Soffit Formwork	6d	09-May-17 A	15-May-17 A	Zone B - OHVD - Erect Scaffolding & Soffit Formwork			
SR8_ZB_1400	Zone B - Redrill & Install Rebar on Soffit of Roof Slab	10d	16-May-17 A	25-May-17 A	Zone B - Redrill & Install Rebar on Soffit of Roof Slab			
SR8_ZB_1440	Zone B - OHVD Place Concrete to OHVD Slab & Wall	1d	24-May-17	24-May-17	Zone B - OHVD Place Concrete to OHVD Slab & Wall			
SR8_ZB_1450	Zone B - OHVD Curing Period for OHVD Slab	10d	25-May-17	06-Jun-17	Zone B - OHVD Curing Period for OHVD Slab			
SR8_ZB_1420	Zone B - OHVD - Rebar Fixing for Slab & Hanger Wall of OHVD	4d	26-May-17 A	30-May-17 A	Zone B - OHVD - Rebar Fixing for Slab & Hanger Wall of OHVD			

- Actual Work
- Remaining Work
- Critical Remaining Work
- ◆ Milestone

Date	Revision	Checked	Approved
20-May-17	DWP-07 (6) - 3 Months Rolling	FS	TL

Activity ID	Activity Name	Original Duration	Start	Finish	2017			
					May	Jun	Jul	Aug
SR8_ZB_1430	Zone B - OHVD Erect Hanger Wall Formwork for OHVD	2d	31-May-17 A	23-May-17				
SR8_ZB_1460	Zone B - OHVD Remove Soffit Formwork & Scaffolding	5d	07-Jun-17	12-Jun-17				
Utility Trough		28d	13-Jun-17	15-Jul-17				
Left Hand Side		21d	21-Jun-17	15-Jul-17				
SR8_ZB_1570	Zone B - U trough (LHS) Bay 3	7d	21-Jun-17	28-Jun-17				
SR8_ZB_1560	Zone B - U trough (LHS) Bay 2	7d	29-Jun-17	07-Jul-17				
SR8_ZB_1550	Zone B - U trough (LHS) Bay 1	7d	08-Jul-17	15-Jul-17				
Right Hand Side		21d	13-Jun-17	07-Jul-17				
SR8_ZB_1600	Zone B - U trough (RHS) Bay 3	7d	13-Jun-17	20-Jun-17				
SR8_ZB_1590	Zone B - U trough (RHS) Bay 2	7d	21-Jun-17	28-Jun-17				
SR8_ZB_1580	Zone B - U trough (RHS) Bay 1	7d	29-Jun-17	07-Jul-17				
Pump House		52d	21-May-17	11-Jul-17				
Remining Works inside Pump Sump E		52d	21-May-17	11-Jul-17				
SR8_ZB_1890	Steel Works Installation inside Pump Sump E	45d	21-May-17	04-Jul-17				
SR8_ZB_1900	Installation Manhole Covers for Pump Sump E	7d	05-Jul-17	11-Jul-17				
SR8 (Zone A) - Ch 317.500 to Ch 210.000 - U-Structure & Slab (Victoria Park)		28d	22-Jan-17 A	26-Jun-17				
RC CCT & Backfill Ch317.5000 to Ch240.000		28d	22-Jan-17 A	26-Jun-17				
Structure		28d	22-Jan-17 A	26-Jun-17				
Utility Through		28d	22-Jan-17 A	26-Jun-17				
SR8_ZA_1260	Zone A - Utility Trough for Zone A (CH240 to CH317)	28d	22-Jan-17 A	26-Jun-17				
Works in KD9 (Include Re-provisioning Works of KD4,KD5)		330d	12-Dec-16 A	12-Oct-17				
External Works Under KD9		330d	12-Dec-16 A	12-Oct-17				
Tsing Fung St - RW & Subway Extension & Toe Wall at Hing Fat St		172d	01-Mar-17 A	07-Sep-17				
Retaining Wall + Toe Wall at Hing Fat Street		172d	01-Mar-17 A	07-Sep-17				
Retaining Wall RW8D		58d	01-Mar-17 A	02-Jun-17				
Works along RW8D During Reopen Hing Fat Street Footpath to Public		58d	01-Mar-17 A	02-Jun-17				
A4910	Close slow lane of HFS to cut coping of RW8D and subway	20d	01-Mar-17 A	26-Apr-17 A				
A4920	Lay temp bituminous pavement for road diversion (from RW8D to Subway)	3d	22-May-17	24-May-17				
A4940	Install steel vehicle parapet on RW8C, subway and RW8D	10d	22-May-17	02-Jun-17				
Retaining Walls RW8E, Sign Footings & Sewer Pipe (SK266G, SK539C, SK375B)		127d	19-Apr-17 A	07-Sep-17				
A4620	Excavate and lay blinding layer of RW8E (Including ELS)	14d	19-Apr-17 A	15-May-17 A				
A4650	MH2-70 to MH2-71 (150 dia. foul sewer pipe)	12d	02-May-17 A	13-May-17 A				
A4670	MH2-72 to MH2-73	12d	15-May-17 A	27-May-17 A				
A4630	Construction of RW8E and toe wall (2+1 bays, 32m long)	45d	16-May-17 A	27-Jun-17				
A4880	DS16 - Sign Frame Installation	14d	21-May-17	03-Jun-17				
A4640	Backfill and subsoil drainage system behind RW8E	14d	28-Jun-17	14-Jul-17				
A4680	MH 2-73 to Extg MH (on footpath)	12d	15-Jul-17	28-Jul-17				
A4690	OHVD and 5m CCTV high mast footing on footpath	14d	29-Jul-17	14-Aug-17				
A4900	TCSS Drawpit and ducts	21d	15-Aug-17	07-Sep-17				
Storm Drain Pipe behind RW8C along Tsing Fung Street (SK547A)		28d	15-May-17 A	23-Jun-17				
A4540	Modified MH shaft A2 at extg box culvert near MH TFS-04A	14d	15-May-17 A	30-May-17 A				
A6410	MHTFS-06 to extg MH A3 (at slow lane of TFS)	14d	22-May-17	07-Jun-17				
A8050	MHTFS-05 to extg MH A3 (gully)	14d	08-Jun-17	23-Jun-17				
Sign Footings at Victoria Park		75d	22-May-17	18-Aug-17				

Activity ID	Activity Name	Original Duration	Start	Finish	2017			
					May	Jun	Jul	Aug
A4570	Construction of 5m CCTV, AID, OHVD, TSG, luminance meter at verge inside VP	60d	22-May-17*	01-Aug-17				Construction of 5m CCTV, AID, OHVD, TSG,
A4580	All drawpits (ATC, E&M and lighting) and ductings at verge inside VP (SK375B)	60d	09-Jun-17	18-Aug-17				All drawpits (
Boundary Fence, Type 2 Railing Footings & Fence Wall From RW8C to Zone B		267d	12-Dec-16 A	12-Oct-17				
A8070	Fence wall between BGO and Zone A (78.2m)	90d	12-Dec-16 A	01-Aug-17				Fence wall between BGO and Zone A (78.2m)
A4700	Construction of boundary fence from RW8C toe wall to 15m CCTV high mast (approx. 53m)	50d	19-Dec-16 A	20-Jun-17				Construction of boundary fence from RW8C toe wall to 15m CCTV high mast (approx. 53m)
A4710	Modification/ Re-construction of extg type 2 railing footing in front of RW8C (approx. 40m)	60d	10-Feb-17 A	30-Aug-17				
A4720	Construction of boundary fence from 15m CCTV high mast to Zone A at CH210 (approx. 50m)	50d	21-Jun-17	18-Aug-17				Construction
A4730	Construction of boundary fence near nursery compound (approx. 167m, after completion of MH 2-73)	90d	27-Jun-17	12-Oct-17				
Other Storm, Sewerage Pipe & Irrigation System in VP (SK336E, SK539D)		170d	21-Feb-17 A	05-Sep-17				
A4770	MH2-71 to TFS-06 via MH2-72 and MH 2-73 (300 dia. concrete pipe)	40d	21-Feb-17 A	26-Jun-17				MH2-71 to TFS-06 via MH2-72 and MH 2-73 (300 dia. concrete pipe)
A4740	FMH-B01 to Extg 1-40 (5 MHs and 7 foul sewer PE pipeline)	90d	22-May-17	05-Sep-17				
A4970	Irrigation Main Laying	14d	27-Jun-17	10-Jul-17				Irrigation Main Laying
A4760	MHB (beside pump sump E) to MH2-70 (300 dia. stormwater pipeline)	14d	27-Jun-17	13-Jul-17				MHB (beside pump sump E) to MH2-70 (300 dia. stormwater pipeline)
A4980	Water Points Installation	14d	11-Jul-17	24-Jul-17				Water Points Installation
Preparation Works before Implementation TTA at Central Median		172d	02-Feb-17 A	20-Aug-17				
A4795	Excavate to formation level and lay subbase, fix K1 kerb along TFS	14d	02-Feb-17 A	05-Jun-17				Excavate to formation level and lay subbase, fix K1 kerb along TFS
A4890	Laying Ducting Cross Access Ramp Down to Zone C SR8 Tunnel	60d	21-May-17	19-Jul-17				Laying Ducting Cross Access Ramp Down to Zone C SR8 Tunnel
A4930	Shifting Site Entrance 6A	4d	20-Jul-17	23-Jul-17				Shifting Site Entrance 6A
A4950	Laying Ducting in New SR8 Approaching Island	14d	24-Jul-17	06-Aug-17				Laying Ducting in New SR8 Approach
A5020	Forming Island Including Sub-base & Kerbing	14d	07-Aug-17	20-Aug-17				Forming
Reverting Traffic for IEC, VP Rd & TF St & Seawall Reinstatement (KD9)		109d	27-Mar-17 A	27-Aug-17				
TTA Revert Traffic Back to Original Alignment		109d	27-Mar-17 A	27-Aug-17				
Preparation Works - Backfill of Zone C to Top of Tunnel Structure		56d	27-Mar-17 A	10-Jun-17				
A5790	Waterproofing & Screeding to Roof	4d	27-Mar-17 A	22-May-17 A				Waterproofing & Screeding to Roof
A5800	Load Transfer for King Post	6d	05-Apr-17 A	25-May-17 A				Load Transfer for King Post
A5820	Zone C - Bay C1 to C5 Backfill to Formation & Remove Struts SL1 to SL3 (Up to +2.5mPD)	44d	10-Apr-17 A	10-Jun-17				Zone C - Bay C1 to C5 Backfill to Formation & Remove Struts SL1 to SL3 (Up to +2.5mPD)
A5780	Curing to Roof Slab of Zone C	3d	17-May-17 A	19-May-17 A				Curing to Roof Slab of Zone C
A5810	Make Good Box-out Left by King Post	2d	26-May-17 A	27-May-17 A				Make Good Box-out Left by King Post
East Bound TTA - IEC East Bound, Victoria Park Road & Footpath along Sea Side		78d	11-Jun-17	27-Aug-17				
Stage 1 - IEC (East Bound)		36d	11-Jun-17	16-Jul-17				
A5240	IEC/EB - Construct Footing of Sign Gantry & Wing Wall	17d	11-Jun-17	27-Jun-17				IEC/EB - Construct Footing of Sign Gantry & Wing Wall
A5260	IEC/EB - Backfill to Formation Level (Approx. 2.2mPD to +3.9mPD)	5d	11-Jun-17	15-Jun-17				IEC/EB - Backfill to Formation Level (Approx. 2.2mPD to +3.9mPD)
A5270	IEC/EB - Reconstruct Wing Wall of Abutment M (approx. 6m)	10d	11-Jun-17	20-Jun-17				IEC/EB - Reconstruct Wing Wall of Abutment M (approx. 6m)
A5280	IEC/EB - Cast Central Median	21d	11-Jun-17	01-Jul-17				IEC/EB - Cast Central Median
A5310	IEC/EB - Remove Temporary Utilities Supports at IEC	3d	11-Jun-17	13-Jun-17				IEC/EB - Remove Temporary Utilities Supports at IEC
A3285	IEC/EB - Cut and Remove Pipe Pile (2m Below Ground Level)	7d	11-Jun-17	17-Jun-17				IEC/EB - Cut and Remove Pipe Pile (2m Below Ground Level)
A5320	IEC/EB - Reinstale Existing Drainage System	14d	14-Jun-17	27-Jun-17				IEC/EB - Reinstale Existing Drainage System
A3286	IEC/EB - Cut and Remove Sheet Pile (2m Below Ground Level)	7d	18-Jun-17	24-Jun-17				IEC/EB - Cut and Remove Sheet Pile (2m Below Ground Level)
A5290	IEC/EB - Street Lighting Cable Duct & Poles	3d	25-Jun-17	27-Jun-17				IEC/EB - Street Lighting Cable Duct & Poles
A5250	IEC/EB - Install A Frame of Sign Gantry	4d	28-Jun-17	01-Jul-17				IEC/EB - Install A Frame of Sign Gantry
A5300	IEC/EB - TOC of Street Lightings	2d	28-Jun-17	29-Jun-17				IEC/EB - TOC of Street Lightings
A5330	IEC/EB - Backfill Drainage Trench Up to Formation (+2.5mPd to +3.9mPD)	5d	28-Jun-17	02-Jul-17				IEC/EB - Backfill Drainage Trench Up to Formation (+2.5mPd to +3.9mPD)
A5340	IEC/EB - Laying Sub-base	2d	03-Jul-17	04-Jul-17				IEC/EB - Laying Sub-base
A5350	IEC/EB - Laying Asphalt Pavement	3d	05-Jul-17	07-Jul-17				IEC/EB - Laying Asphalt Pavement

Activity ID	Activity Name	Original Duration	Start	Finish	2017			
					May	Jun	Jul	Aug
A5360	IEC/EB - Road Mark & Traffic Signs	3d	08-Jul-17	10-Jul-17			■ IEC/EB - Road Mark & Traffic Signs	
A5370	IEC/EB - Implement TTA to Divert Traffic to IEC East Bound	1d	16-Jul-17	16-Jul-17			■ IEC/EB - Implement TTA to Divert Traffic to IEC East Bound	
Stage 2 - Vitoria Park Road		35d	24-Jul-17	27-Aug-17				
A5380	VP Road - Remove Ligth Weight Concrete Ramp	21d	24-Jul-17	13-Aug-17			■ VP Road - Remove Lig	
A5390	VP Road - Reinstate Pararpet Wall of IEC Bridge	35d	24-Jul-17	27-Aug-17			■ VP Road - Reinstate Pararpet Wall of IEC Bridge	
A5400	VP Road - Traffic Deck & Footing Removal	14d	24-Jul-17	06-Aug-17			■ VP Road - Traffic Deck; & Footing R	
A5410	VP Road - Cut Pipe Piles	7d	07-Aug-17	13-Aug-17			■ VP Road - Cut Pipe Pili	
A5420	VP Road - Cut Sheet Piles	7d	14-Aug-17	20-Aug-17			■ VP Road	
West Bound - IEC West Bound & Tsing Fung Street		78d	11-Jun-17	27-Aug-17				
Stage 1 - IEC (West Bound)		36d	11-Jun-17	16-Jul-17				
A5690	IEC/WB - Cut pipe pile - 1 week	7d	11-Jun-17	17-Jun-17		■ IEC/WB - Cut pipe pile - 1 week		
A5710	IEC/WB - Removal of pedestrian decking	11d	11-Jun-17	21-Jun-17		■ IEC/WB - Removal of pedestrian decking		
A3785	IEC/WB - Reconstruct Wing Wall of Abutment M (approx. 6m)	10d	11-Jun-17	20-Jun-17		■ IEC/WB - Reconstruct Wing Wall of Abutment M (approx. 6m)		
A5700	IEC/WB - Cut sheetpile - 1 week	7d	18-Jun-17	24-Jun-17		■ IEC/WB - Cut sheetpile - 1 week		
A5720	IEC/WB - Remove temporary utilities support 3 days	3d	22-Jun-17	24-Jun-17		■ IEC/WB - Remove temporary utilities support 3 days		
A5730	IEC/WB - Backfill up to Formation under Asphalt (from +2.5mPD to +3.9mPD) 5 days	5d	25-Jun-17	29-Jun-17		■ IEC/WB - Backfill up to Formation under Asphalt (from +2.5mPD to +3.9mPD) 5 days		
A5740	IEC/WB - Subbase Laying 2 days	2d	30-Jun-17	01-Jul-17		■ IEC/WB - Subbase Laying 2 days		
A5750	IEC/WB - Asphalt (Road Base, Base Course, Wearing Course) 5 days	5d	02-Jul-17	06-Jul-17		■ IEC/WB - Asphalt (Road Base, Base Course, Wearing Course) 5 days		
A5760	IEC/WB - Road Marking/Traffic Sign 3 days	3d	07-Jul-17	09-Jul-17		■ IEC/WB - Road Marking/Traffic Sign 3 days		
A5840	IEC/WB - Implement TTM	1d	16-Jul-17	16-Jul-17		■ IEC/WB - Implement TTM		
Stage 2 - Tsing Fung Street		42d	17-Jul-17	27-Aug-17				
A5850	Decking /Footing Removal - 2 weeks	14d	17-Jul-17	30-Jul-17			■ Decking /Footing Removal - 2 weeks	
A5880	Light Weight Conc. Ramp Rem. 4 weeks	28d	17-Jul-17	13-Aug-17			■ Light Weight Conc. Ra	
A5890	Trench Excavation for Towngas - 4 weeks	28d	17-Jul-17	13-Aug-17			■ Trench Excavation for	
A5860	Cut pipe pile - 1 week	7d	31-Jul-17	06-Aug-17			■ Cut pipe pile - 1 week	
A5870	Cut sheetpile - 1 week	7d	07-Aug-17	13-Aug-17			■ Cut sheetpile - 1 week	
A5900	Diversion of Towngas at TFS - 3 weeks	21d	07-Aug-17	27-Aug-17			■ Diversion of Towngas at TFS - 3 weeks	
A5910	Backfill up to Formation (from +2.5mPD to +3.9mPD) 5 days	5d	14-Aug-17	18-Aug-17			■ Backfill up to	
A5920	Installation of Cross Road Duct of street lighting - 3 days	3d	14-Aug-17	16-Aug-17			■ Installation of Cr	
A5930	K1 kerb installation - 1 week	7d	19-Aug-17	25-Aug-17			■ K1 kerb installation - 1 week	
Reinstatement Existing Slopping & Vertical Sea Wall		55d	11-Jun-17	04-Aug-17				
Major Reinstatement Works for Seawall Reinstatement		55d	11-Jun-17	04-Aug-17				
Stage 1 - Removal of Remaining Pipe Pile Wall, Sheet Pile Wall & D-wall		55d	11-Jun-17	04-Aug-17				
A7030	Backfill upto +2.5mPD at all bay of SR8	1d	11-Jun-17	11-Jun-17		■ Backfill upto +2.5mPD at all bay of SR8		
A7040	Cut pipe pile wall at A1 - A14	14d	12-Jun-17	25-Jun-17		■ Cut pipe pile wall at A1 - A14		
A7050	Under water cut sheet pile wall (36 nos.)	40d	26-Jun-17	04-Aug-17			■ Under water cut sheet pile wall (36 nos.)	
Works in Victoria Park (KD4, KD5, KD9)		184d	20-Jan-17 A	29-Aug-17				
Re-Provisioning Works		184d	20-Jan-17 A	29-Aug-17				
Nursery Compound		184d	20-Jan-17 A	29-Aug-17				
Submission		123d	20-Jan-17 A	26-Jun-17				
ABWF Submission		76d	03-Feb-17 A	10-May-17 A				
Material		21d	19-Apr-17 A	10-May-17 A				
VP_NC_1070	ABWF Material Delivery	21d	19-Apr-17 A	10-May-17 A		■ ABWF Material Delivery		
Shop Drawing		14d	03-Feb-17 A	03-May-17 A				

Activity ID	Activity Name	Original Duration	Start	Finish	2017			
					May	Jun	Jul	Aug
VP_NC_1090	ABWF Shop Drawing - ER Review and Approval	14d	03-Feb-17 A	03-May-17 A	ABWF Shop Drawing - ER Review and Approval			
E&M Submission		123d	20-Jan-17 A	26-Jun-17				
Material		123d	20-Jan-17 A	26-Jun-17				
VP_NC_1140	E&M Issue P.O. / Manufacturing / Fabrication	15d	20-Jan-17 A	21-May-17 A	E&M Issue P.O. / Manufacturing / Fabrication			
VP_NC_1150	E&M Materail Delivery	30d	22-May-17	26-Jun-17	E&M Materail Delivery			
Shop Drawing		30d	08-May-17 A	19-Jun-17				
VP_NC_1170	E&M Shop Drawing - ER Review and Approval	30d	08-May-17 A	19-Jun-17	E&M Shop Drawing - ER Review and Approval			
Nursery compound		60d	05-Apr-17 A	29-Aug-17				
A4420	ABWF, Plumbing Works, waterproofing and E&M works	60d	05-Apr-17 A	12-Aug-17	ABWF, Plumbing Worl			
A4470	Lay CWP, FWP and FSP inside NC (inspection by WSD & FSD)	45d	08-Jul-17	29-Aug-17				
KD11, KD12, KD13, KD18 Establishment Works for Landscape Softworks		1087d	23-Feb-15 A	10-Mar-18				
KD11 - Section 7A: Portion XIV & XV (Victoria Park Open Space)		885d	23-Feb-15 A	10-Mar-18				
EW_1000	Establishment Works - for Landscape Softworks and transplanted trees in Portion XIV & XV	901d	23-Feb-15 A	10-Mar-18				
KD12 - Section 7B: Portion VI & VII (Reprov. Bowling Green Area)		177d	03-Dec-15 A	22-May-17				
EW_1010	Establishment Works - for Landscape Softworks and transplanted trees in Portion VI & VII	177d	03-Dec-15 A	22-May-17	Establishment Works - for Landscape Softworks and transplanted trees in Portion VI & VII			
KD10 - Preservation and Protection of Trees		1088d	21-Mar-13 A	22-May-17				
PPT_0000	Preservation and Protection of Existing Trees	1088d	21-Mar-13 A	22-May-17	Preservation and Protection of Existing Trees			
KD15 & KD8 - Mooring Components Upkeep (CBTS and ATS)		980d	15-May-14 A	22-May-17				
MAR_3020	Mooring Upkeep at Portion X(10) & XVI(16) - CBTS	979d	15-May-14 A	22-May-17	Mooring Upkeep at Portion X(10) & XVI(16) - CBTS			
Works for Public Works Regional Laboratory (North Lantau) - KD1, KD16, KD17		1301d	19-Jul-13 A	21-Nov-17				
KD17 - Maintenance and Upkeep of New PWRL (Portion XVII)		1301d	19-Jul-13 A	21-Nov-17				
PWRL_1050	Maintenance/ Upkeep of New PWRL	1301d	19-Jul-13 A	21-Nov-17				